

A Deer Hunting Nature Walk

Understanding the Meaning of 'Itadakimasu'



Hokkaido is currently facing an overpopulation of Ezo deer, which is disrupting the delicate balance of its ecosystem. To address this ecological challenge, active deer hunting and the sustainable use of venison have become crucial conservation measures. This tour offers an immersive experience, walking through the forests where the deer live, guided by professional hunters and naturalists who ensure safety and provide ecological insight. Participants will gain a deeper understanding of nature by witnessing a hunt first hand. If a deer is successfully harvested, you will assist with field dressing and transport. This trip is an opportunity to reflect on the fundamental human connection with nature - how life is sustained by the taking of another. By experiencing this process, you will come to appreciate the true essence of 'Itadakimasu' and the responsibility that comes with it.

What is 'Itadakimasu'?

In Japan, before every meal, it is customary to say 'Itadakimasu', a phrase that expresses gratitude for the food being received. This simple yet profound greeting acknowledges the lives—both plant and animal—that have been sacrificed for sustenance, as well as the efforts of those who have prepared the meal. Rooted in Buddhist and Shinto traditions, 'Itadakimasu' reflects a deep respect for nature, the interconnectedness of life, and the recognition that survival is made possible through the consumption of other living beings.

Highlights:

- A rare opportunity to accompany an Ezo deer hunt in the wild.
- Expert nature guides providing in-depth explanations on ecology, safety, and the hunter's perspective.
- Experience the true meaning of 'Itadakimasu' by participating in the process of hunting and utilizing game meat.
- Flexible sightseeing arrangements can be made in the free time between Ezo deer hunting.

Location:

Eastern Hokkaido : Around the Shiretoko Peninsula (Shari, Kiyosato)

Main Activity: Walking, Wildlife Observation, Culture

Difficulty: 2 (Easy active)

Tour Dates: October - March

Pax: Minimum 4 Maximum 4

Price: JPY 350,000 (Tax incl. / per person) ※ reference price

[Route map](#)

[Day-by-day Itinerary](#)

[What's included](#)

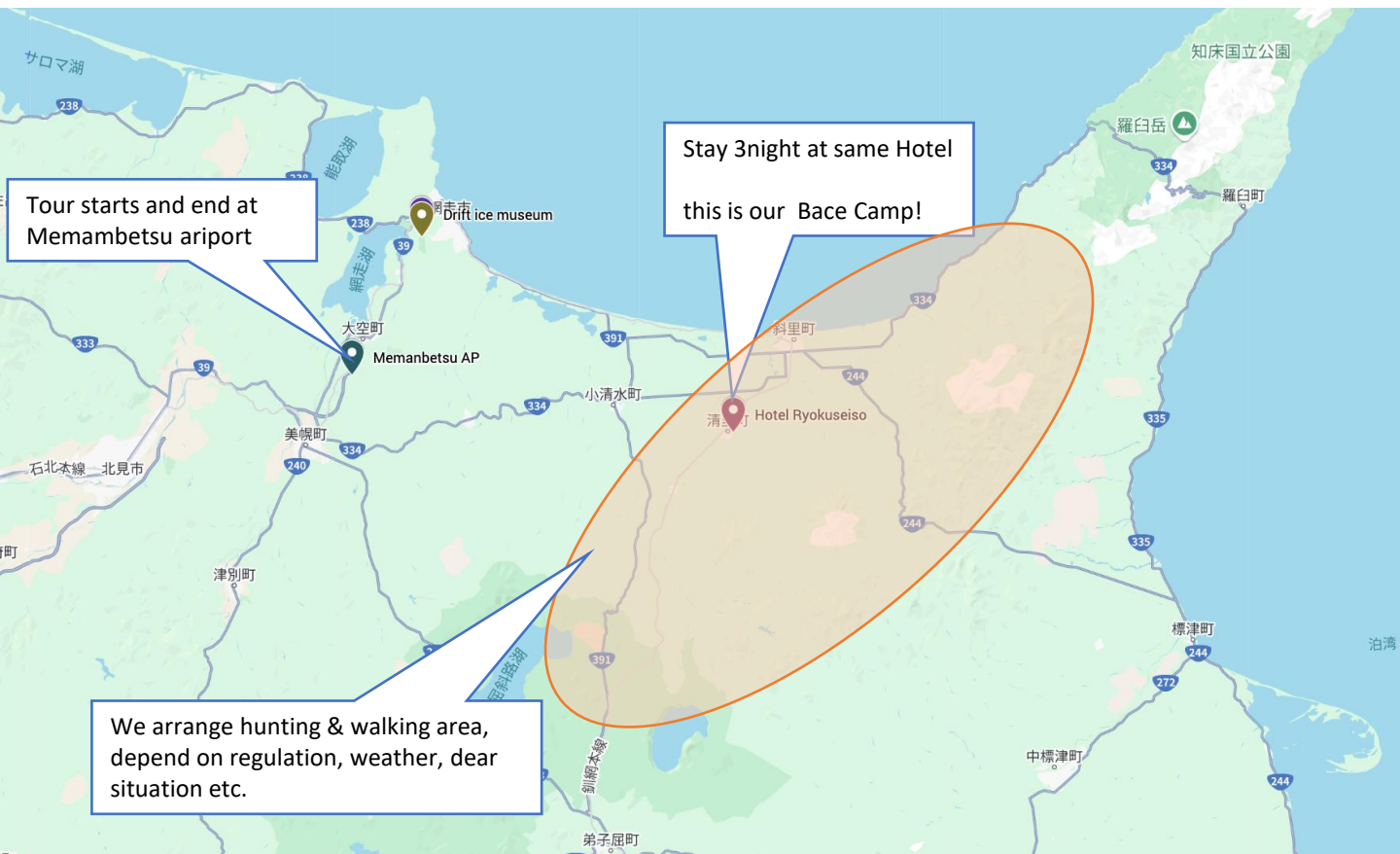
[We provide & What to bring](#)

[About us](#)

[Information and Requirements](#)

[Reservation & Cancellation policy](#)

Route map



Day-by-day Itinerary

- Day 1 - Learning About Ezo Deer and Hokkaido's Ecosystem

Afternoon: Arrival at Memanbetsu Airport.

Visit the Drift Ice Museum, where the observatory floor provides a panoramic view of the tour's activity areas. Learn about the landscapes of eastern Hokkaido, from Abashiri to the Shiretoko Peninsula, and the coexistence of nature and industry.

A short guided walk through the forest to observe deer in their natural habitat.
(Snowshoes will be used in winter.)

Evening: Introduction to Deer Hunting

A comprehensive briefing on the ecological issues posed by Ezo deer overpopulation, Japan's hunting system, and the broader ecosystem of eastern Hokkaido.

Discussion on deer behavior, biological characteristics, and how they fit into the food chain.

Included meals : Hotel dinner

Activity : Short walking

Difficulty : 2 (1.5 hours)

In winter, we use snowshoes, so we walk through the forest with a guide to practice walking.

Day-by-day Itinerary

- Day 2 . Accompanying the Hunt

Early morning hunt (5:00–8:00)

Evening hunt (14:00–17:00)

Hunting is an intricate practice that requires a blend of outdoor skills, ecological knowledge, and precise execution. Throughout the experience, you will learn about the different hunting methods employed in Hokkaido. Typically, hunters use vehicles to traverse forest roads before entering on foot, but the strategy depends on real-time conditions.

Since Ezo deer are most active during dawn and dusk, hunting sessions take place in these critical time slots. Over two days, participants will accompany four separate hunting expeditions, adapting to varying environmental conditions. Our expert through-guide will explain the logic behind each hunt, offering insights into the decision-making process of a professional hunter. This hands-on observation allows you to witness a truly authentic interaction between humans and nature.

Deer Processing Observation:

If a deer is successfully harvested, participants will assist with field dressing, transportation, and processing at a licensed facility.

If no deer is taken, an alternative tour of a venison processing facility will be provided.

Included meals : Hotel breakfast , Hotel dinner

Activity : Hunting accompaniment , Walking , Wildlife watching

Difficulty : 2 (6 hours)

- Day 3. Accompanying the Hunt

Early morning hunt (5:00–8:00)

Evening hunt (14:00–17:00)

Basically, same schedule as day2

==Midday Free Time & Optional Excursions==

Between morning and evening hunting sessions, participants have free time. The following optional activities are available:

Drift Ice Walk (February only)



Kaminoko Pond Nature Walk

Shiretoko Nature Walk



Scenic tour of Lake Mashu and Lake Kussharo



Included meals : Hotel breakfast , Restaurant dinner

Activity : Hunting accompaniment , Walking , Wildlife watching

Difficulty : 2

- Day 4 - The Historical Connection Between Humans and Deer

Morning: Visit the Northern Peoples Museum.

Explore the lifestyles of indigenous and northern peoples worldwide, understanding how they have survived in cold climates for millennia.

Learn how hunting has been an essential aspect of human life until very recently, shaping cultural traditions and survival strategies.

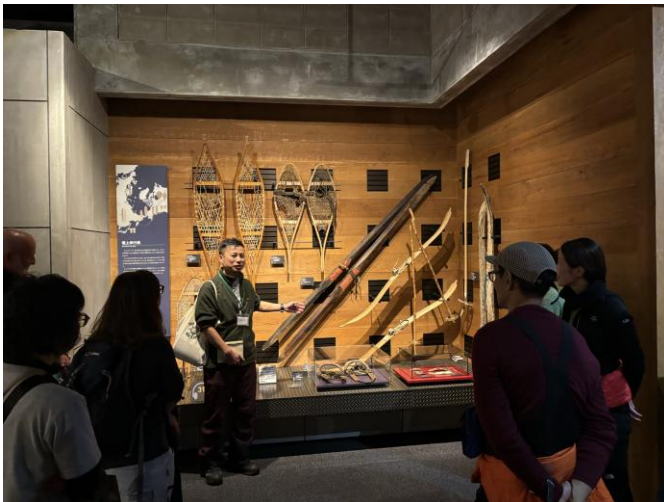
Reflect on the experience and the meaning of 'Itadakimasu' in today's world.

Afternoon: Departure from Memanbetsu Airport.

Included meals : Hotel breakfast

Activity : Museum

Difficulty : 1



Northern Peoples Museum

Accommodations :

DAY 1 : Kiyosato , Japanese onsen hotel , Japanese or western style room , Wi-Fi

DAY 2 : Kiyosato , Japanese onsen hotel , Japanese or western style room , Wi-Fi

DAY 3 : Kiyosato , Japanese onsen hotel , Japanese or western style room , Wi-Fi

What's included

- All activities include in this itinerary
- 3 nights accommodation
- 3 breakfasts , 3 dinners (Morning and Dinner only)
- Private vehicle transportation (Parking, fuel, highway fees incl.)
- Well trained English speaking guide with first-aid skills (WAFA)
- Tour operation fees
- Taxes (10% consumption tax)

Not included

- Airfares
- Personal expenses
- Alcoholic drinks or beverages not included meals

Please note that you will be asked to show your passport when checking into accommodation in Japan. It is a requirement for accommodation providers to take a photocopy of the passports of overseas guests.

We provide & What to bring

We provide

- 24 hours emergency response service
- First-aid kit
- Complete version itinerary (English)
- Able to have changes for accommodations, eateries if you have any requests

What to bring

This tour include outdoor activities such as forest walking and wildlife watching. Additionally, the average temperature on October to December is low so please prepare enough clothing and gears before you join the tour.

Personal belongings to be prepared by participants:

- Earth-colored clothing and athletic shoes that are easy to move outside
- Warm clothing, knit hat, gloves
- Rain wear and rain hat (no umbrellas so as not to affect the animals)
- Water bottles
- Sunscreen
- Binoculars
- Any medicine you may need

About us



Contact : info@doto-adventure.net

Website : <https://doto-adventure.net/>

DOTO Adventure Network

“Doto Adventure Network” is a coalition of coordinators, travel designers, land operators, and through-guides specializing in Eastern Hokkaido, the 'Doto Area.' Deeply rooted in the region, we promote sustainable tourism for the future.

Guides



Gen TERAYAMA

- Travel Service Arrangement Operations Manager
- Wilderness Advanced First aid
- Leave No Trace Level 1 Instructor

Since 2006, I have called Shiretoko home, bringing over a decade of experience in travel, wildlife management, and regional branding. I have guided trips to remote regions like Nepal, Mongolia, and Antarctica and worked on brown bear conservation and national park management. An adventurer at heart, I was the first Japanese to ski from Cho Oyu's summit. Now, I focus on promoting Shiretoko's beauty and developing long-distance trails like the Hokkaido East Trail, inviting travelers to immerse themselves in nature and meaningful adventures.



Akimasa TAKIKAWA

- Hokkaido Adventure travel guide (Mountain)
- Wilderness Advanced First aid
- Leave No Trace Level 1 Instructor

Originally from Sapporo City. Moved by the hospitality shown to him by people in various regions during his backpacking trip around the world, he wanted to be the one to host others next, so he started working in the tourism industry in Sapporo. In search of a new place to live, he moved to Bihoro Town as a local revitalization volunteer after the COVID-19 pandemic. After graduating, he mainly worked as an outdoor guide (Pecan Planning), and was involved in developing the tourism area, such as by building trails, as a director of the Bihoro Town Tourism and Products Association.

Information and Requirements

Dietary Restrictions

We believe that eating like the locals is the best way of experiencing Hokkaido's unique culture. However, we understand that it is not possible for everyone to do this and we are more than happy to cater for food allergies, dietary restrictions, and special requirements. If you have any diet restrictions or preferences, please tell us in the Registration Form at the time of booking, and we will do our best to accommodate your dietary needs.

In some rural areas particularly, we may ask you for some flexibility. For example, if you require halal food, we may be able to substitute for a vegetarian option instead. For those who are allergic to MSG, please be aware that it may be difficult to arrange a good alternative at every meal in Japan. Some of our overseas guests in the past found it difficult to find ready-made foods completely free of MSG, especially when buying from convenience stores. Most Japanese supermarkets sell simple foods like plain bread, boiled eggs, vegetables, and fruits, so you should always be able to find something suitable. The most important thing about dietary requirements is to let us know in advance so we can prepare and organize the foods you need.

Emergency Response Plan

Your safety is our top priority, closely followed by fun and comfort! All our tour guides have years of guiding experience in the outdoors under their belt. We require all of our guides to be certified as Advanced First-Aid Responders or in Wilderness First-Aid. At all times our guides will carry a first-aid kit, as well as have an extra kit in the vehicle. Depending on the terrain and the potential risks it poses for each trip, our guides will also have the necessary safety and climbing equipment. In case of heavy rain, strong winds, or other unsafe weather conditions for activities such as hiking or canoeing, there may be times where we must change the tour plan. In such cases we will try to substitute the original activity with alternatives such as sightseeing, visiting museums, or hot springs. We take charge of turning a bad day around into a fun day!

Weather Conditions

Hokkaido's pleasant summer attracts many visitors from the other regions of Japan escaping from the unbearable summer heat and humidity. May is the middle of spring, and October is the middle of autumn. From May through October the highest temperature is approximately 25°C / 77°F in August, and the lowest is approximately 10°C / 50°F in October. The highest rainfall is 182mm(7.1inches) in August. Japan in September and October can bring typhoons. Although they are not as frequent as on mainland Honshu, occasionally Hokkaido is hit by a cyclone (a weakened typhoon as it has travelled over Honshu to Hokkaido). Be prepared for variable weather - warm, cold, and wet - to ensure your comfort and safety while traveling.

Reservation & Cancellation Policy

Payment Methods

We will send a booking confirmation by email with an invoice requesting a deposit

A 20% Deposit is required for the confirmation of the booking.

The remaining cost(Balance Payment) is due 21 days before your arrival.

Payment is acceptable by Credit card or Bank Transfer:

A. Credit card

We will send you a link with a form to fill in your credit card details

B. Bank Transfer

Please process the payment from your local bank in Yen.

All Transaction Fees will be paid by remitter

Cancellation

- Cancellation fees apply from 20 days prior to the travel starting date
- 20% of the tour price will apply 20 days prior to the travel starting date
- 30% of the tour price will apply 7 days prior to the travel starting date
- 40% of the tour price will apply 1 days prior to the travel starting date
- 50% of the tour price will apply on the travel starting date
- 100% of the tour price will apply after the start of the tour or the traveler does not participate in the Tour without notice

Reservation & Cancellation Policy

Disclaimer

Assumption of risk and safety declaration

Travelers are advised that all activities are undertaken entirely at their own risk and they must behave in a fit and proper manner at all times in accordance with Hokkaido Treasure Island Travel Inc's guidelines. All adventure tours and outdoor activities carry inherent risks and Hokkaido Treasure Island Travel Inc nor its partners do not assume any responsibility for accidents that are caused by its customers or caused by factors outside of human control.

With the purchase of your trip you acknowledge that:

By its very nature, adventure travel, hiking and cycling tours are more challenging and demanding with a significantly higher level of risk, and involve potential exposure to injury and possibly death.

Additional dangers and risks associated with adventure travel may include difficult and dangerous terrain; high altitude; extremes of weather, including sudden and unexpected changes; political instability; remoteness from normal medical services and from communications; and evacuation difficulties in the event of illness or injury.

You must follow our guide's instructions and use any safety equipment provided at all times. For the above reasons you accept the inherent and increased dangers and risks associated with the proposed adventure and the accompanying risk of injury, death or property damage or loss.

Our Responsibilities and Exemptions from Responsibility

All Travelers are required to acknowledge the Terms and Conditions that we provide to them before contracting with us. The Traveler acknowledges that he or she understands the Terms and Conditions, as well as the following information about exemptions from our responsibility.

- We shall be responsible for compensating any damage caused to the Traveler intentionally or negligently by us or by our agent in the performance of this Contract.

However, this shall be limited to cases when we have received notice within two years from the time when the accident occurred.

- Except as provided in the preceding Paragraph, we will not be responsible for compensation in the following cases:

- (1) Acts of providence
- (2) Maelstrom of war or civil commotion
- (3) Suspension of Tour Services including transport and accommodation facilities
- (4) Orders from government and public agencies
- (5) Other causes beyond our control or the control of our agents

Partner Company

Hibi Japan

Provide tailor made tour with authentic adventures, local cultural contents in Hokkaido.

Ernest Mok (Representative Director/ Travel designer)

Contact: ernest@hibi-japan.com

Website: <https://www.hibi-japan-travel.com/>



Tour Operator / Contact



Hokkaido Treasure Island Travel Inc.

9F Daito Bldg, Minami 2-jo Higashi 2-chome 8-1, Chuo-ku, Sapporo City, Hokkaido, Japan

We are Hokkaido Treasure Island Travel (HTIT), an award-winning team of creators of unique, perfectly tailored Hokkaido travel experiences. The HTIT Team is deeply connected to Hokkaido, in northern Japan. In 2004, HTIT started its journey as the pioneer of a new style of adventure travel by sharing the treasures of Hokkaido. We are constantly opening new doors and making local destinations previously inaccessible for travelers available all over Hokkaido. We provide a compelling combination of personal and professional travel advice, knowledge beyond that of a guidebook, and behind the scenes access to places and authentic local experiences generally not available for the public. Our mission is to create for you a journey of a lifetime every time you travel with us.