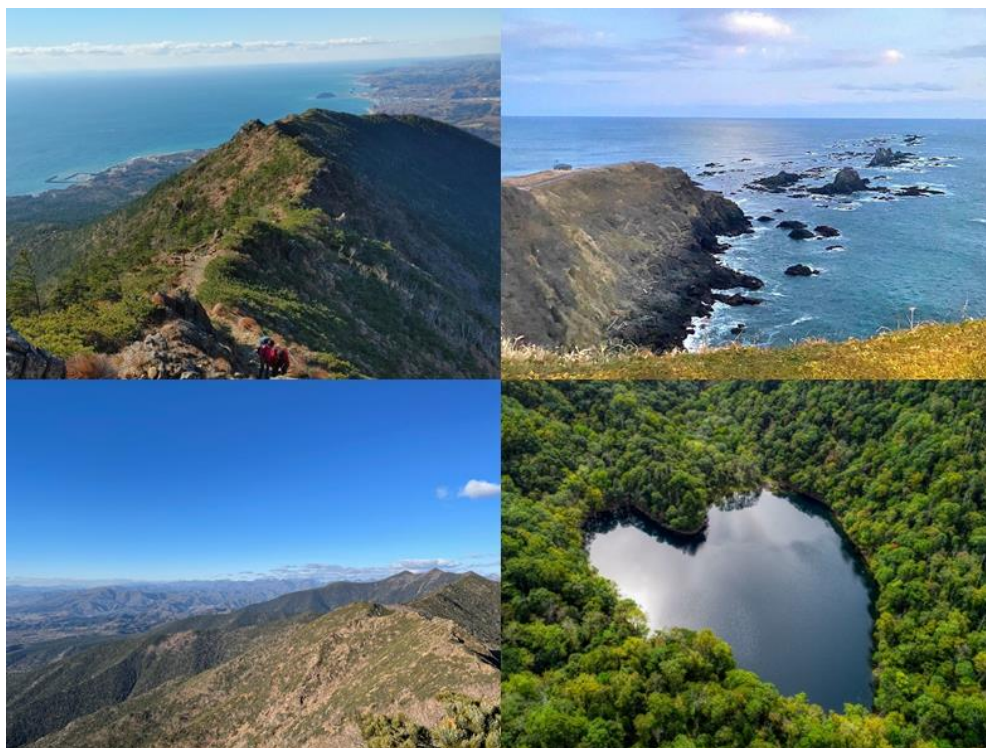


## Mt. Apoi Hiking Tour

### ～ Immerse Yourself in the Nature of Tokachi-Hidaka Area ～

---



The Tokachi and Hidaka regions of Hokkaido are a natural paradise, where majestic mountains, beautiful coastlines, and rich wildlife coexist. This tour offers a chance to experience the breathtaking scenery and abundant nature with all five senses. You will immerse yourself in the local atmosphere, feel the waves and breeze at Cape Erimo, enjoy the stunning views of mountains like Mount Apoi, and taste delicious dishes made from fresh local ingredients. It is a special experience that connects you deeply with nature, fulfilling all your senses in the heart of the great outdoors.

## Highlights:

- Discover culture and history of tokachi, and connect with the area through art.
- Refresh your body and mind while enjoying a walk around Lake Toyoni.
- Experience the powerful winds while enjoying the ocean views at Cape Erimo.
- Hike Mt. Apoi for stunning views of the majestic Hidaka mountain range.
- Enjoy the fresh flavors of Tokachi-Hidaka, made with local ingredients.

## Location:

The Tokachi-Hidaka area is located in the southern part of Eastern Hokkaido. It has also been designated as part of the Hidaka Mountains Erimo-Tokachi National Park, preserving its natural beauty.

**Main Activity:** Mt. Apoi Hiking

**Difficulty:** 3

**Tour Dates:** From early June to late October.

**Pax:** Minimum 5                      Maximum 10

**Price:** JPY 180,000

[Route map](#)

[Day-by-day Itinerary](#)

[What's included](#)

[We provide & What to bring](#)

[About us](#)

[Information and Requirements](#)

[Reservation & Cancellation policy](#)

## Route map



# Day-by-day Itinerary

## Day 1 –

### Meet up at Obihiro Station and explore Tokachi's art, nature, and local flavors

After meeting at Obihiro Station, we will head to Rokkatei Art Village, where you can immerse yourself in the beautiful landscapes and history of Tokachi through impressive art. As you explore, you'll rediscover the unique charm of this area.

Next, we'll enjoy a delicious lunch at Restaurant Poroshiri, featuring fresh, local ingredients that showcase the natural flavors of Tokachi.

After lunch, we'll take a leisurely walk through Rokka Forest, enjoying breathtaking views of the Hidaka Mountains and seasonal flowers. It's a wonderful opportunity to relax and connect with nature using all your senses.

Then, we'll visit Handa Farm, a family-run dairy farm, where you can taste rich, locally made soft-serve ice cream and learn about the farm's natural products. It's the perfect place to appreciate the fresh, abundant nature of the region.

Later, we'll check in at Hotel Taiki, a peaceful retreat surrounded by nature.

For dinner, we'll enjoy a unique blend of Japanese and Italian cuisine at "Wafu Italian Chotto", using fresh ingredients from Tokachi and Taiki Town.

After a full day of exploration, you'll return to the hotel to relax and unwind, reflecting on the unforgettable experiences of your first day in Hokkaido.

## Dinner

A restaurant in Taiki town where you can enjoy Japanese-Italian cuisine made with fresh local ingredients from Tokachi and Taiki town, all while enjoying a view of the Hidaka Mountains.

**Activity:** Rokka Forest Walk

**Difficulty:** 1

## Day 2 - Toyoni Lake and Cape Erimo Exploration

After departing from the hotel, we will head to Toyoni Lake for a peaceful lakeside walk. This beautiful heart-shaped lake offers a serene environment where you can immerse yourself in nature, listening to the sounds of the wind and birds, while enjoying the reflection of the surrounding landscape on the lake's surface. It's a place that stimulates all your senses, and there's even a chance to encounter wildlife, making it a perfect opportunity to feel at one with nature.

Next, we'll enjoy a warm and hearty lunch at the local restaurant "Takahashi Farm & Shorthorn Kingdom Maburitto", where you can savor the flavorful beef raised in the vast natural surroundings of Erimo. Known for its tender, juicy texture and low fat, the meat is served with fresh local ingredients, offering a taste of the region's natural bounty.

In the afternoon, we'll visit the "Kaze no Yakata" at Cape Erimo, where you can take a relaxing walk while enjoying breathtaking ocean views. Then, we'll head to the "Apoi Geopark Visitor Center", where you'll learn about the geological and natural environment of Mt. Apoi and prepare for the next day's hike.

Finally, we'll return to Apoi Sanso, where you can relax in your comfortable room, surrounded by natural light and greenery. It's the perfect place to recharge and reflect on the day's adventures in the beautiful nature of Erimo.

### Breakfast

Enjoy a Japanese-style breakfast at our 4th-floor lounge with a stunning panoramic view of the Hidaka Mountains. A set meal featuring traditional Japanese dishes is served, while rice, soup, and beverages are available in a buffet-style setting.

### Lunch

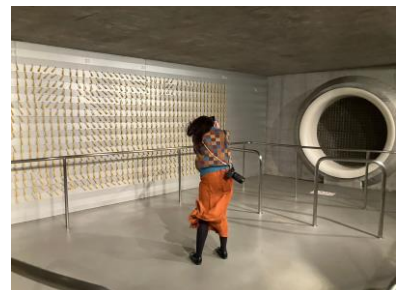
Enjoy lunch at Erimo Tankaku Kingdom, Takahashi Farm, where you can savor delicious dishes made with locally raised Tankaku (Shorthorn) beef, known for its rich flavor and tenderness. Experience the unique taste of this premium beef in a beautiful natural setting.

### Dinner

At Apoi Sanso, the finest seasonal ingredients from the mountains and sea are brought together in carefully crafted dishes that highlight the region's natural bounty.

**Activity:** Toyoni Lake and Cape Erimo Stroll

**Difficulty:** 2



## Day 3 - Mt. Apoi Hiking

Departing from the hotel, we will begin our adventure with a hike up Mt. Apoi, a volcanic mountain standing at 810 meters. As part of the Mt. Apoi Geopark, the mountain offers a unique landscape. The trail leads through rich alpine vegetation and vast natural beauty, allowing you to enjoy breathtaking views.

Along the way, you'll encounter diverse wildlife and experience the refreshing presence of nature. The hike to the 5th station provides an excellent opportunity to learn about the mountain's wonders with the guidance of an expert.

Next, we will pass through the stunning Goshiki Gorge, known for its beautiful autumn foliage, on our way to the pizza-making experience.

For lunch, we'll head to the Satsunai River Campground for an outdoor pizza-making experience. You will craft your own pizza dough using locally sourced wheat from Tokachi, topped with fresh ingredients from Nakasatsunai Village, and baked in a traditional pizza oven. Enjoy your handmade pizza surrounded by the beauty of nature, offering a truly special and indulgent experience.

Afterward, we will return to Obihiro Station, bringing the tour to a close.

## Breakfast

This Japanese breakfast set offers a rich variety of carefully selected dishes, all in one meal.

## Lunch

The pizza dough is handmade using wheat from Tokachi, topped with fresh ingredients from Nakasatsunai Village.

Baked to perfection in a special pizza oven, this original pizza is a delicious way to experience the rich flavors of the local region.

**Activity:** Hiking at Mt. Apoi

**Difficulty:** 2





## We provide & What to bring

Request participants to prepare by providing a list of gear and clothing in advance.  
Conduct a pre-trip survey to confirm participants' experience in hiking, fitness levels, and food preferences to provide tailored guidance.

### We provide

- Extra water and snacks
- Emergency shelter
- First-aid kit
- Extra portable toilet

### What to bring

- ☐ = Necessary / ☐ = Recommended
- ☐ Underwear (Base layer)
  - ☐ Hiking boots (or trekking shoes)
  - ☐ Socks
  - ☐ Trekking pants
  - ☐ Shirt (non-cotton, synthetic fabric)
  - ☐ Hat/Cap
  - ☐ Gloves
  - ☐ Backpack
  - ☐ Backpack rain cover
  - ☐ Rain gear (top and bottom)
  - ☐ Cold-weather clothing
  - ☐ Knit hat for warmth
  - ☐ Snack food
  - ☐ Water bottle
  - ☐ Gaiters
  - ☐ Portable toilet (can be purchased locally)
  - ☐ Sunglasses
  - ☐ Sunscreen
  - ☐ Trekking poles
  - ☐ Binoculars
  - ☐ Camera

# We provide & What to bring

## Customer Information Needed in Advance

- Hiking/Trekking experience
- Walking duration capacity
- Walking pace
- Age
- Health status (existing medical conditions, medication, etc.)
- Dietary restrictions (allergies, etc.)
- Travel insurance status and details
- Emergency contact details

## About us

The company is certified by JATA's Tour Quality Japan Quality Assurance System for Tour Operators. Our mission is to provide the highest quality services to our clients. We specialize in Japan inbound tours focusing on Hokkaido. As a leading travel agency, KNT offers a wide range of services, including customized itineraries, guided tours, and seamless travel experiences. We ensure that each client's journey is memorable and tailored to their preferences.



- ATTA Members
- Special ATTA Website for B2B ([www.amazing-hokkaidotrip.com](http://www.amazing-hokkaidotrip.com))

## < Mountain Climbing Guide >

### **【Arata Yasuhito】**

- Certified Outdoor Guide by the Hokkaido Governor, specializing in "Mountain Guide (Summer & Winter)" and "Mountain Field Master Guide"
- Project WET Certified, Ministry of the Environment Certified Nature Park Instructor
- WMAJ-WAFA Certified (Wilderness First Aid), Japan Sports Facilities Association CPR and AED Training Completion
- Ministry of Education Certified Nature Experience Activities Instructor
- MFA Japan Training Completion
- Completed Basic Life Support I and III, Advanced Life Support Skills I



# Information and Requirements

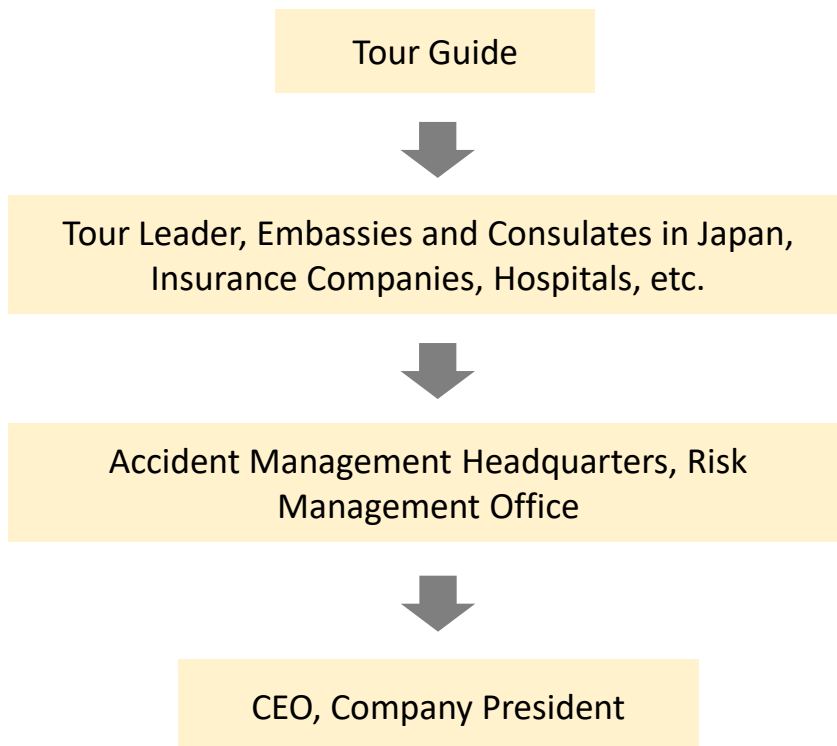
## Dietary Restrictions

We provide special meals for participants with allergies, as well as for vegetarians and vegans, upon request in advance.

## Emergency Response Plan

- Certified Wilderness First Aid
- Completed First Aid Training upon obtaining certification by the Japan Mountain Guide Association  
(Basic First Aid Class such as CPR or AED, injury treatment (treat or transport) for broken bones and sprains, treatments for heatstroke, hypothermia, bee stings and allergies including anaphylactic shock, outdoor emergency response training for simulated scenes, such as communication, treatment and transportation)
- Practice sessions at the beginning of each guiding season  
(summer and winter)

### <Operation Flow>



# Reservation & Cancellation Policy

## Payment Methods

We will send a booking confirmation by email with an invoice requesting 10% deposit per person due within 14 days of invoice date. The remaining balance is due 14 days prior to departure. If KNT has not received deposit amount by the due date, the booking will be cancelled.

## Cancellation

Cancellation fee is as follows. (The date is based on Japan time.)

Cancellation	
10%	28 days to 22 days before the departure date
20%	21 days to 15 days before the departure date
30%	14 days to 8 days before the departure date
50%	7 days to 3 days before the departure date
80%	2 days before the departure date
100%	From the day before the departure date

# Disclaimer

## Disclaimer

We are not liable or responsible for any damages or injuries caused by the following actions and/or reasons:

- Willful or gross negligence caused by insurance policy holders, other insured persons and insurance beneficiaries
- Fights, suicides and criminal behavior
- Traffic accidents whether or not drivers are insured, the driving of motorcycles without licenses, driving under the influence of alcohol and/or drugs, whether prescription or illegal
- Brain and other diseases, insanity
- Pregnancy, childbirth, premature birth, abortion
- Surgical operations (except for accidents caused by us)
- Accidents and riots related to wars and revolutions
- Earthquakes, volcanic eruptions, tsunamis, and other Acts of God
- Nuclear contamination caused by nuclear accidents
- Mountain climbing using tools such as ice axes; rock climbing; luge; bobsled; skeleton sports; flying planes; sky diving; hang gliding; riding super-light powered machines such as motor hang gliders, micro light aircraft, and ultra light aircraft
- Racing, competing, performing and test driving of automobiles, motorcycles, motorboats, etc.
- Whiplash or back pain without independent medical proof
- Willful or gross negligence caused by you
- Liability for damages directly caused by your performance of duties (damages occurring during your work)
- Liability for damages to your consigned goods caused by you (damage to hotel facilities and rooms is however covered)
- Liability for damages caused by your ownership, usage or management of the following items: vehicles including golf carts and rental cars, motorized bicycles, aircraft, ships including motorboats, and firearms including air guns
- Liability for damages to your family members living at the same address as you, and family members traveling together
- Liability for damages caused by your loss of mental facilities

---

## Tour Operator / Contact

KINKI NIPPON TOURIST CO., LTD. SAPPORO GROUP TOUR BRANCH  
NX Sapporo Bldg., 6F, 2-1, West2, North3, Chuo-ku, Sapporo, Hokkaido 060-0003, Japan

Misae Tatemastu(MS) : m.tatematsu045@kntct.com