

Cycling and hiking at the foot of Mt. Rishiri for a great nature experience



Three days and two nights in Rishiri Island, the northernmost island of Hokkaido, for a great nature experience: on the first day, a visit to the Rishiri Town Museum and a guided walk in the Minamihama wetlands; on the second day, cycling around the island and a stop at Hime-numa pond, and in the afternoon, a hike up Mt. Pon to enjoy the spectacular view. On the final day, visit the Rishiri Island Museum “Rippu”. Cycling and hiking with the majestic view of Mt. Rishiri as a backdrop, visitors will experience the diversity of nature on the island. This is a trip where you can spend a luxurious time to heal your body and soul together with learning about the history of the island.

Highlights:

- Sightseeing on the island with the magnificent sight of Mt. Rishiri in the background
- Island history and nature study at the Rishiri Town Museum
- Observation of rare ecosystems through guided walks in the Minamihama marshland
- Cycling around the island while feeling the fresh sea breeze
- Admire the spectacular view of Mt. Rishiri at the serene Hime-numa.
- 360-degree panoramic view experience by hiking Mt. Pon
- Explore island culture at Rippu, the Rishiri Island Museum
- Diverse nature experiences through cycling and hiking
- Taste exploration of local cuisine with a focus on local seafood
- Luxurious time to interact with nature to refresh your mind and body

Location:

Rishiri Island, Hokkaido

Main Activity: Cycling and hiking

Difficulty: 3

Tour Dates: May - July

Pax: Minimum 2 Maximum 4

Price: JPY200,000 per person for Adult (tax included)

[Route map](#)

[Day-by-day Itinerary](#)

[What's included](#)

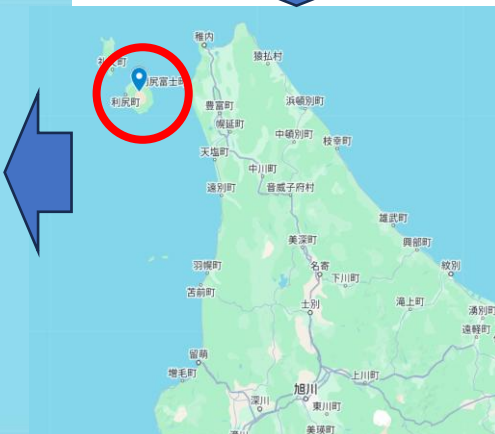
[We provide & What to bring](#)

[About us](#)

[Information and Requirements](#)

[Reservation & Cancellation policy](#)

Route map



Day-by-day Itinerary

Day 1 - Visit Rishiri Town Museum, Minamihama Marsh guided walk.

AM:

Arrive at Oshidomari Port in Rishiri Island, meet the guide.

After that, tour starts with guide operator: Rishiri Hana Guide Club.

PM:

Visit Rishiri Town Museum (1 hour)

Learn about the island's history, industry (fishing), and nature.

Minamihama Marshland guided walk (1 hour)

Almost flat wooden course with hidden flower spots and unique scenery.

Lunch

On own

Dinner

Local cuisine using island ingredients at the accommodation

Activity: Minamihama Marshland guided walk

Difficulty: 1

Day 2 - Rishiri Island Cycling, Hime-numa Guided Walk, Mt. Pon Hiking

AM:

Rishiri Island Cycling: Rishiri Island Spectacular Blue Line Course (3 hours: total distance: approx. 18 km, total time required: 3 hours, difference in elevation: approx. 130 m),

Hime-numa Guided Walk (1 hour (stopover during cycling):

Easy and popular walking course on a wooden path with little elevation difference around Hime-numa)

PM:

Mt. Pon Hiking (3 hours: Kanro Sensui – Mt. Pon course (uphill), approx. 2 km one way, paved road, mountain path from the middle of the course, height difference: approx. 200 m)

Breakfast Local cuisine using island ingredients at the accommodation

Lunch On own

Dinner Local cuisine using island ingredients at the accommodation

Activity: Cycling and Hiking

Difficulty: 3

Day 3 - Visit Rishiri Island Museum “Rippu”

AM:

Visit Rishiri Island Museum “Rippu” (1 hour)

Learn about the rich nature, history and culture of Rishiri Town), then transfer to Rishiri Island Oshidomari Port

Tour Ends

Breakfast Local cuisine using island ingredients at the accommodation

Accommodations :

Day1 : Pension Green Wind or Hotel, Ryokan

Room type: Western-style room or Japanese-style room with bath and toilet

Day2 : Pension Green Wind or Hotel, Ryokan

What's included

- Meals (Breakfast x 2, Lunch x 0, Dinner x 2)
- Accommodation 2 nights
- All the activity fees
- All transportation
- Activity Guide
- An English speaking Japanese guide

We provide & What to bring

We provide

- Bycycle Gear

What to bring

< Cycling and Hiking >

- Rain gear (rain wear)
- Backpack
- Drink (My bottle is recommended)
- Shoes for easy walking

Recommended to bring:

- Hat
- Sunscreen
- Sunglasses

About us

JTB -- “Perfect moments, always.”

The JTB Group traces its roots back to 1912 when “Japan Tourist Bureau” was formed to attract international travelers to Japan and assist with their travel needs. While our activities and clientele have expanded greatly since then, the JTB Group remains aligned around a core purpose: bringing people, places and possibilities together. Developing innovative services and solutions that enable our customers to connect more deeply and meaningfully. Contributing to the creation of sustainable communities and a more peaceful and interconnected planet.

No matter how the world changes, the JTB Group remains as committed now as we were 108 years ago to delivering unrivaled excitement, value and satisfaction. At its essence, JTB’s legacy resides in the bonds of trust we have forged with our customers, communities and stakeholders.

The JTB Group is poised to embark on the next exciting chapter in its incredible journey, staying attuned to and aligned with the evolving needs of a new era, maintaining its position as a digital trailblazer, and delivering real value that our customers can feel.



Guides

Rishiri Hana Guide Club, Hirasawa (Cycling, Hiking, Walking)

Hokkaido Outdoor Association, Mountain Guide certification, Fire Department “First Aid provider” certification by fire department, Completed Risk Management Manager Training Course

Information and Requirements

Dietary Restrictions

If you have any dietary restrictions or allergies, please let us know in advance. We will provide you alternatives to the best of our abilities.

Emergency Response Plan

We will arrange appropriate guides so that everyone can enjoy outdoor activities safely and securely in nature throughout the four seasons.

In the event of an accident, your guide will respond promptly in cooperation with local medical personnel.

Reservation & Cancellation Policy

Payment Methods

Only payments by credit card will be accepted.

Cancellation

*Cancellation fee (per person)

- Cancellations from the 10th to 8th day starting from the day before the start date of the trip... 20% of the travel fee
- Cancellations from the 7th to 2nd day starting from the day before the start date of the trip... 30% of the travel fee
- Cancellation the day before the start date of the trip... 40% of the tour fee
- Cancellation on the day of the start date of the trip (exclude (1) below) ... 50% of the tour fee
- Cancellation after the start of the trip or no contact, no participation (1) ... 100% of the tour fee

Disclaimer

If it rains lightly, the tour will be held. However, in the event of a typhoon or rainstorm, the event may be cancelled. In the event of bad weather, the cycling/hiking/walking route may be changed.

Tour Operator / Contact



JTB Corp. HOKKAIDO Branch

c/o Urban Net Sapporo Bldg., 1-2 Nishi 6-chome, Kita 1-jo,
Chuo-ku, Sapporo, Hokkaido, Japan 060-0001

Phone : +81-11-271-7028

Email : hokkaido_inbound@jtb.com