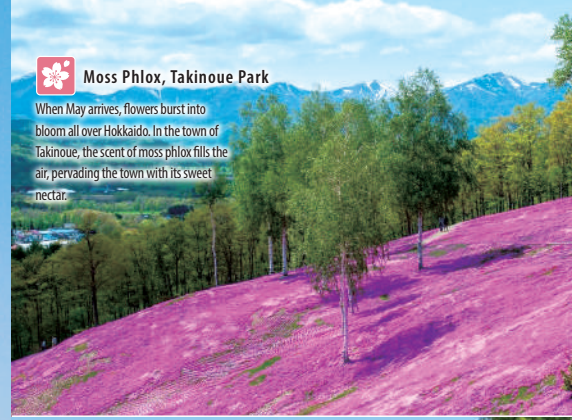


Hokkaido covers 22% of Japan's land area. Studded with volcanic caldera lakes and hot springs, the broad island is a transition zone where birds, beasts, fish, trees and flowers of the north and south intermingle. Spring, summer, and autumn splash the land with vivid hues. Winter brings world-class powder snow. The island's bountiful nature will fill you with wonder and delight.



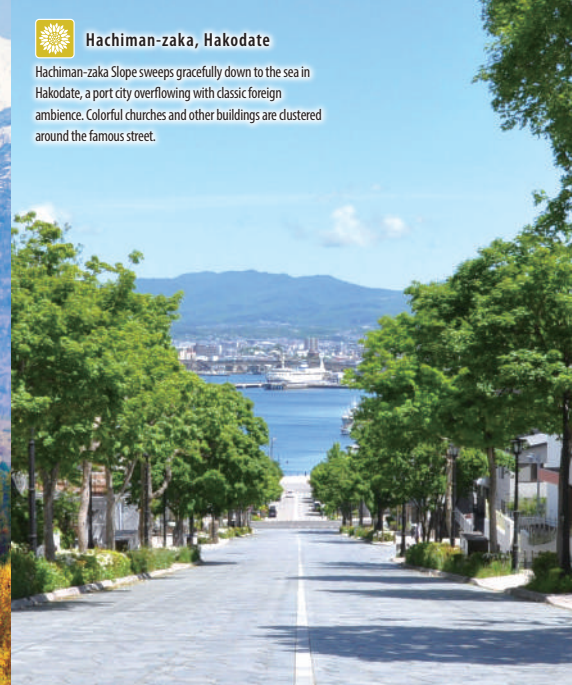
### Moss Phlox, Takinoue Park

When May arrives, flowers burst into bloom all over Hokkaido. In the town of Takinoue, the scent of moss phlox fills the air, pervading the town with its sweet nectar.



### Hachiman-zaka, Hakodate

Hachiman-zaka Slope sweeps gracefully down to the sea in Hakodate, a port city overflowing with classic foreign ambience. Colorful churches and other buildings are clustered around the famous street.



### Fall Colors, Odori Park

In Odori Park, which marches through the very heart of Sapporo, trees welcome October with a riot of color.



### Frost Flowers, Lake Akan

When winter arrives, icy "frost flowers" bloom on the frozen lake surface. Ask a nature guide to show you!



### Lavender Fields, Lake Kanayama, Furano

Visitors can enjoy canoeing and other activities on the lake while enjoying views of the lavender fields on the shore. On calm days, the lake mirrors ethereal reflections of the mountains beyond.



### Tulip Gardens, Cape Saraki

Tulips burst into flower all at once as spring comes to Cape Saraki in Kikonai town. Behind stands a monument and memorial honoring the Kanrin Maru, a warship which played a part in Japan's early modern history and founded off the Cape.



### Shikisai no Oka and Mt. Tokachi

September. Fall comes briefly to the Daisetsu Mountains. As flowers fade at Shikisai no Oka in Biei, a snowy blanket descends on Mt. Tokachi in the distance.

# Introduction



Hokkaido constantly tops the list as the most attractive region of Japan. But what kind of place is it, really? Here's what you can find.

## Average temperature in Hokkaido

	January	February	March	April	May	June	July	August	September	October	November	December
HAKODATE	-2.4	-1.8	1.9	7.3	12.3	16.2	20.3	22.1	18.8	12.5	6.0	-0.1
SAPPORO	-3.2	-2.7	1.1	7.3	13.0	17.0	21.1	22.3	18.6	12.1	5.2	-0.9
ASAHIKAWA	-7.0	-6.0	-1.4	5.6	12.3	17.0	20.7	21.2	16.4	9.4	2.3	-4.2
ABASHIRI	-5.1	-5.4	-1.3	4.5	9.8	13.5	17.6	19.6	16.8	10.9	4.0	-2.4
KUSHIRO	-4.8	-4.3	-0.4	4.0	8.6	12.2	16.1	18.2	16.5	11.0	4.7	-1.9
WAKKANAI	-4.3	-4.3	-0.6	4.5	9.1	13.0	17.2	19.5	17.2	11.3	3.8	-2.1

(Average temperatures in °C from 1991 to 2020)

## Seasonal changes and clothing in Hokkaido

### Spring

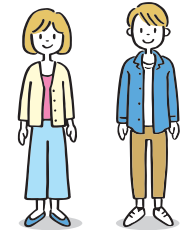
- March** | Days grow warmer. Roads are slushy in the daytime but icy at night.
- April** | Snow begins to disappear. Businesses on winter hiatus re-open.
- May** | Cherry blossoms and other spring flowers bloom, later than in Honshu. Mornings and evenings are chilly.

- ★ Winter clothes are best until mid-April.
- ★ Days are warm but nights are cold, so stay comfortable by layering.
- ★ Bring outerwear such as a light coat or parka.

### Summer

- June** | Generally pleasant, though humid, rainy days are now more common.
- July** | Summer begins in earnest, but mornings and evenings are cool. Season for fireworks and summer cuisine.
- August** | As warm as midsummer, with cool mornings and evenings. Summer events in full swing.

- ★ Light summer wear is order, but have a warm layer for cool nights, too.
- ★ It's hard to avoid sunshine, so bring a hat or sun umbrella.
- ★ Even midday can be cool on some days, especially on the Pacific coast, so don't forget your sweater!



### Hokkaido's Tourism Mascot Kyun-chan

Kyun-chan is a round-eared, round eyed northern pika from Hokkaido. The character wears a deer- or local specialty-themed hood and presents Hokkaido's many charms.



Japanese Pika

An endangered species found in a few regions such as the Daisetsu Mountains. It's characterised by its small, cute form and high-pitched squeak.

### Autumn

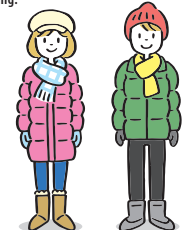
- September** | A refreshing time of year. Fall colors begin to tinge the mountains. Gourmet food events are common.
- October** | A romantic month, when trees in the city turn red and gold.
- November** | First snow. Cold weather, but seafood is abundant and delicious.

- ★ Days are warm but nights are cold, so stay comfortable by layering.
- ★ Days grow colder from mid-September onward. A coat or jacket is a must.
- ★ Dress for winter from late October onwards.

### Winter

- December** | Snow accumulates, turning roads white and slick. Festive lights are everywhere.
- January** | Very cold. Traditional Japanese events are held. Blizzards are more frequent.
- February** | Drift ice begins to arrive. Winter events are held all over the island.

- ★ Wear a scarf, gloves, long coat, a hat that covers your ears to stay warm when going out.
- ★ Ice cleats and waterproof spray—available from footwear stores—make the icy streets less slippery.
- ★ Buildings are warm, so you can stay comfortable by layering.

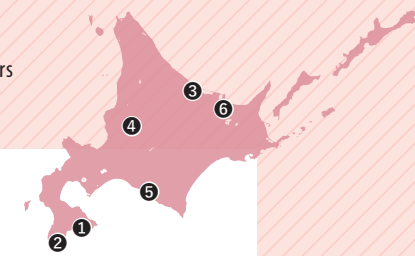


Four seasons scenery beautiful!

# Spring

In late March, the snow begins to melt. As May nears, cherry trees and wildflowers bloom, and hibernating animals wake and emerge. Visitors can enjoy skiing until early May in mountainous areas such as Niseko and Daisetsuzan.

trees and wildflowers bloom, and hibernating animals wake and emerge. Visitors can enjoy skiing until early May in mountainous areas such as Niseko and Daisetsuzan.



## 1 Sakura Oasis: Goryokaku Park

Japan's first Western-style star fort and its surrounding moat are ringed with pink during the blossom season. The park offers many ways to enjoy the flowers. As well as taking a stroll, visitors can rent rowboats or gaze out from the nearby Goryokaku Tower.

- Goryokaku Park | 44 Goryokaku-cho, Hakodate
- Best seen: late April—early May
- Approx. 1,600 cherry trees

## 2 Sakura Oasis: Matsumae Park

Home of Matsumae Castle, which is the northernmost castle in Japan, Hokkaido's only traditional-style castle, and the last Japanese castle ever built. The cherry blossom season here lasts a whole month thanks to the many early- and late-blooming varieties. During this time, the Matsumae Cherry Blossom Festival is held, which hosts various events to enjoy.

- Matsumae Park | Matsushiro, Matsumae-cho, Matsumae-gun
- Approx. 10,000 cherry trees (250 varieties)
- Best seen: late April—mid May
- Illuminated: sunset—20:30



## 3 Kamiyubetsu Tulip Park



Once the town's main agricultural product, tulips grown in a field for posterity by local enthusiasts attracted so much attention that a park was built. Today, tourists can see 700,000 tulips from around 200 varieties.

- Kamiyubetsu Tulip Park
- 365 Kamiyubetsu Tondenshigaichi, Yubetsu-cho, Mombetsu-gun
- Best seen: mid-May—late May

## 5 Nijukken Road Cherry Blossoms, Shizunai



With over 2,000 cherry trees along a seven-kilometer line, Nijukken Road is Japan's longest cherry blossom boulevard. This cherry blossom spot, listed as a Hokkaido Heritage site, reaches full bloom in early to mid-May. When you walk down the path, strewn pink with petals, you feel like the lead of a love story.

- Nijukken Road Cherry Blossoms | Shizunai Tahara—Shizunai Misono, Shinhidaka-cho, Hidaka-gun
- Best seen: early May—mid May

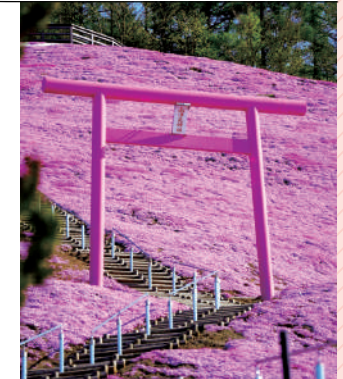
## 4 Takikawa's Canola Flowers



Ebeetsu, Takikawa and the surround area is one of Japan's largest canola-growing regions. When the crop flowers, the rolling landscape becomes a bright carpet of yellow. To find the best spot for viewing, ask the local tourism center, which is set up at Takikawa Roadside Station for the Canola Flower Festival.

- Tourist Center (Takikawa Roadside Station) | 11-13 Ebeetsucho Higashi, Takikawa (only during the Canola Flower Festival)
- Best seen: mid-May—early June

## 6 Higashimokoto Shibazakura Park



Shibazakura, known in English as moss phlox, produces tiny pink flowers shaped like cherry blossoms. In mid-May, the best time to visit, the park looks like it's covered in a blazing pink carpet. Viewed from below or the hill lookout, it's a beautiful sight. Notable features include the Yamatsumi Shrine, which has a rare pink torii gateway.

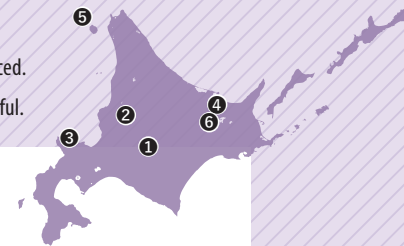
- Higashimokoto Shibazakura Park | 393 Higashimokoto Suehiro, Ozora-cho, Abashiri-gun
- Best seen: May—early June

Four seasons scenery  
beautiful!

# Summer

With everything from dynamic mountaintop cloudscapes to  
The colorful agritourism farms, wildflower wetlands, and

patchwork paddies and meadows, Hokkaido's summer will leave photographers entranced.  
alpine highlands that all begin to bloom with flowers around June are especially beautiful.



1

## Farm Tomita, the Lavender Park

One of Hokkaido's foremost agritourism farms, with 14 flower fields within its wide estate. Visitors can experience around 80 flower varieties during the year. In summer, marigolds, dahlias, and poppies bloom vibrantly. The most breathtakingly beautiful sight of all is the huge lavender fields, which color the whole hillside vivid purple.

- Farm Tomita | 15 Kisen Kita, Nakafurano-cho, Sorachi-gun.
- Best seen: late June–early August

## 3 Shakotan Blue



Behold the famous "Shakotan blue"! Through the clear water, the seabed is visible six meters down. Such is the wonder of this quasi-national park, which offers 300-degree views from Cape Kamui and the glorious Shimamui Coast beyond a narrow tunnel.

- Cape Kamui | Kozaki-cho, Shakotan-cho, Shakotan-gun
- Shimamui Coast | Irika-cho, Shakotan-cho, Shakotan-gun

## 4 Märchen Hill



Beside the main road, like a scene from a child's picture book, a line of larches stands against an endless sky. Natural variation like dawn, dusk, and the changing seasons make this a must-see for landscape photography lovers all year round.

- Märchen Hill view point/parking area  
Memanbetsu Showa, Ozora-cho, Abashiri-gun

## 6 Sea of Clouds, Bihoro Pass



Bihoro Pass looks out over Lake Kussharo, one of Japan's biggest caldera lakes. The seas of clouds and sunny panoramic lake views entrance tourists passing through with their motorbikes or camper vans. The roadside station at the top of the pass is the perfect spot for lunch with a view.

- Gurutto Panorama Bihoro Pass Roadside Station | Furuume Bihoro, Abashiri-gun

## 5 Alpine Flora, Rebun Island



Rebun, nicknamed the "Floating Island of Flowers," lies within Rishiri-Rebun-Sarobetsu National Park and is Japan's northernmost remote island. About 300 species of alpine plants grow on Rebun. As there are no bears, you can enjoy the spring and summer flowers from the seven hiking trails at your leisure.

- Rebun Island | Rebun-cho, Rebun-gun
- Flower season: May–September

## 2 Hokuryu Sunflower Village

Inspired by European sunflower fields, local residents began growing sunflowers here over 40 years ago. As time passed, the sunflowers became a town-wide project. Today, Hokuryu's sunflower plantation is one of Japan's largest, with around two million flowers blooming all at once.

- Hokuryu Sunflower Village | 143-2 Itaya, Hokuryu-cho, Uryu-gun
- Best seen: late July–mid-August

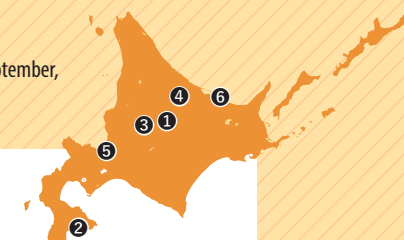


Four seasons scenery beautiful!

# Autumn

As the flower season draws to a close, fall colors come to then continues throughout the rest of the island until early

Hokkaido. In the Daisetsu Mountains, Japan's earliest autumn foliage climaxes in mid-September, November. Greater summer temperature variations lead to more vibrant leaf colors.



## 1 Fall Colors, Mt. Asahi

Japan's first fall colors appear on Mt. Asahi in the Daisetsu Mountains. While the view from the cable car is already amazing, we recommend getting off at Sugatami Station to spend an hour exploring the mountain's vast fall-tinted beauty. If you have proper climbing gear, you can head up to Susoaldaira, where awaits scenery so breathtaking that Ainu called it *Kamuy Mintar*—"Playground of the Gods."

- Sugatami Pond | Asahikawa Onsen, Higashikawa-cho, Kamikawa-gun
- Best seen: late August—late September

## 2 Fall Colors, Kosetsuen

Kosetsuen is the only garden in Hokkaido designated as a national cultural property. It hosts the Hakodate MOMI-G Festa foliage festival, and is renowned for its fall colors. At night, dreamy illuminations light up the 100-meter-long row of maples. Besides the 150 or so tree species, the historic buildings are also attractive.

- Kosetsuen | Miharashi Park, 56 Miharashi-cho, Hakodate
- Best seen: mid-October—early November



## 3 Fall Larch Colors, Biei



Japanese larch is the only conifer in Japan that loses its needles before winter. Many were planted around Biei to shelter cropland from strong winds. In late fall, these windbreaks turn orange all at once, but the needles soon fall, so don't miss it!

- Viewpoint: Patchwork Hills region in Biei-cho, Kamikawa-gun
- Best seen: end of October—beginning of November

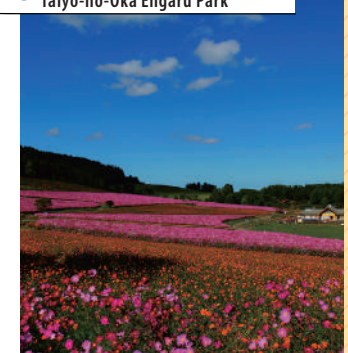
## 5 Ginkgo Avenue, Hokkaido University



Hokkaido University's Ginkgo Avenue is a prime spot for fall colors. Seventy yellow ginkgo trees stretch their branches over a road 380 meters long, forming veritable a tunnel of gold. This glorious spot is within walking distance of Sapporo Station, so stop by!

- Hokkaido University Ginkgo Avenue  
Hokkaido University, North 13, West 5-7, Kita-ku, Sapporo
- Best seen: late October—early November

## 4 Niji-no-Hiroba Taiyo-no-Oka Engaru Park



At 10 hectares, Niji-no-Hiroba is one of Japan's largest cosmos fields, with about ten million flowers of 20 species, including native hybrids. Under the deep blue Okhotsk sky, the sight takes your breath away. Local volunteers plant, weed, and care for the flowers, giving the park an atmosphere of sincerity.

- Taiyo-no-Oka Engaru Park | 70-1 Marudai, Engaru-cho, Mombetsu-gun
- Best seen: late August—late September

## 6 "Coral Grass," Okhotsk Coast



Known to locals as "coral grass," glasswort grows in abundance on the shores of brackish northern lakes. In fall, the 15–30 cm stick-like plants change color, transforming lake shores into bright red carpets. Coral grass colonies can be found at the Ubaranai Glasswort Community at Lake Notoro near Abashiri, and at other lakes near the Sea of Okhotsk or Nemuro Strait.

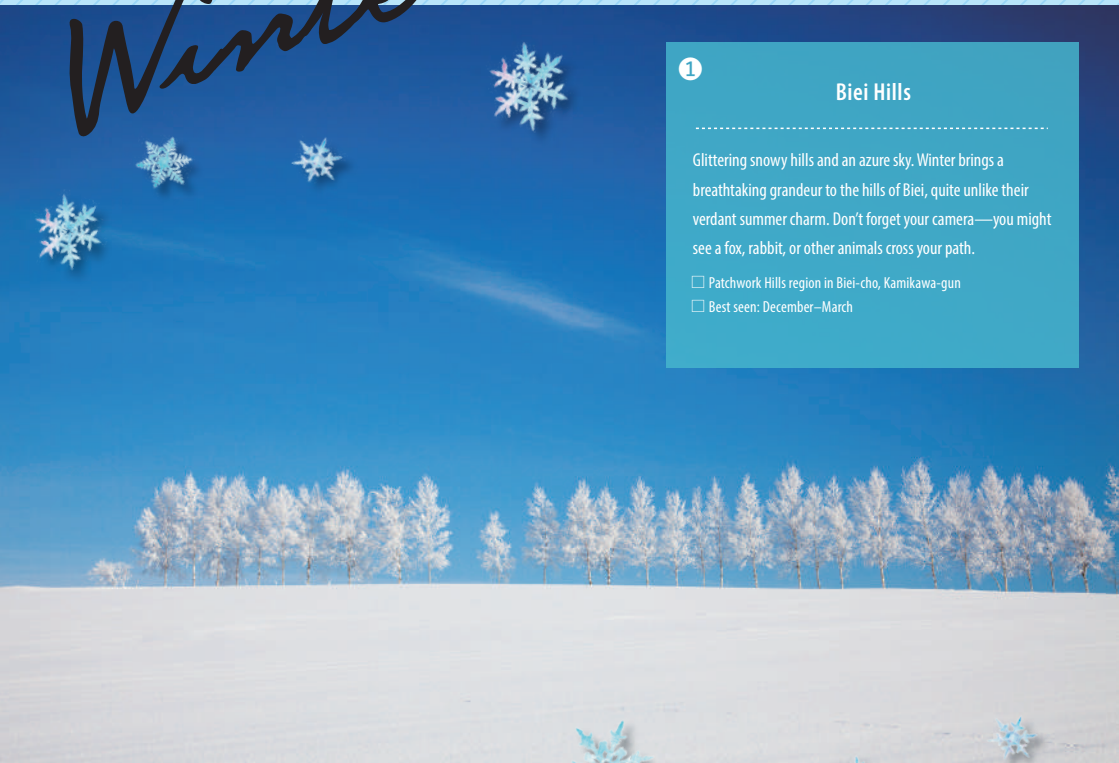
- Viewpoint: Ubaranai Glasswort Community | 60-3 Ubaranai, Abashiri
- Best seen: early September—early October

Four seasons scenery  
beautiful!

# Winter

In winter, snow and ice cover the land. Bathed in illuminated cities and moonlit nature look even

reflected sunlight, the white world seems brighter than in summertime. dreamier. The cold is bitter, so remember to wrap up.



1

## Biei Hills

Glittering snowy hills and an azure sky. Winter brings a breathtaking grandeur to the hills of Biei, quite unlike their verdant summer charm. Don't forget your camera—you might see a fox, rabbit, or other animals cross your path.

- Patchwork Hills region in Biei-cho, Kamikawa-gun
- Best seen: December–March

3 Ice Horizon



In winter, ice forms in Notsuke Bay, a bay in Nemuro Strait encircled by Notsuke Peninsula, Japan's longest sandspit. Visitors can enjoy the vast, uninterrupted horizon not water but ice as they walk on the frozen sea. Nature tours featuring trick photography are popular.

- Notsuke Peninsula Nature Center | 63 Notsuke, Betsukai-cho, Notsuke-gun
- Tours held: mid-January–early March

4 Sapporo Nightscape, Mt. Moiwa



Sapporo's nightscape ranks in Japan's new top three. It's best seen from Mt. Moiwa, which towers 531 meters high near the city center. Take the cable car to the summit observation deck for a 360-degree view. The light reflecting off the snow makes the panorama truly romantic.

- Mt. Moiwa Ropeway | 5-3-7 Fushimi, Chuo-ku, Sapporo
- Winter Season: December–March (last lift 21:30)

5 Fuyu-no-Shitsugen Steam Locomotive



The Fuyu-no-Shitsugen ("winter wetland") runs through Kushiro Shitsugen National Park during the winter. Passenger enjoy sweeping views of untouched nature, with glimpse of deer and cranes. Some carriages offer outward-facing seats for watching the Kushiro River and wetlands, others have potbelly stoves. No matter where you sit, you'll enjoy the train's powerful sound and drifting plume.

- Fuyu-no-Shitsugen | Kushiro–Shibecha daily round trip, JR Senmo Main Line
- Runs January–March on selected days

6 Asahiyama Zoo Penguin Walk



See animals in their natural state at Japan's northernmost zoo. The winter Penguin Walk reenacts wild penguins' march to find food. The funny, cute penguins themselves are excited to get exercise and draw crowds of admirers.

- Asahiyama Zoo | Kuranuma, Higashi Asahikawa-cho, Asahikawa
- Held during the snow season



2 Jewelry Ice

"Jewelry ice" is the name given to chunks of ice washed down the Tokachi River and cast up onto Otsu Beach at the river mouth. It's like but unlike drift ice. The glassy ice splits sunlight into glittering shafts that change hue throughout the day, and is popular with photographers.

- Jewelry House  
208-16 Otsu Motomachi, Toyokoro, Nakagawa-gun
- Best seen: mid-January–early March

## Chance encounters—a pleasure of travel.

You can meet so many kinds of animals while touring Hokkaido! Some are even endemic to the island. If you meet one, it's sure to become a treasured memory.



**EZO BROWN BEAR**

Ezo brown bears are Japan's largest animal, and only live in the forests of Hokkaido. They can become ferocious to defend their cubs if humans approach, but usually they avoid us. If you take a boat cruise from Shiretoko, then with luck you might see a bear climbing the mountains or catching fish in a stream.

## EZO RED FOX

The Ezo red fox is a subspecies of the red fox and is found all over Hokkaido. It's found as often around human settlements as it is in the forest, and it's not unusual to encounter them on country roads. Although they are extremely cute, nearly all wild foxes carry parasites, so don't ever touch them!



### Warning!

Squeak!

Follow the rules  
and stay safe!



- Don't approach wild animals.
- Don't feed wild animals.
- Animals may try to dash across the road while you drive. Be careful!
- If you come across a wild animal, leave the area quietly.
- Don't touch wild animals.
- If you come into contact with animal excreta, etc., take appropriate steps such as handwashing, gargling and so on.



## RED-CROWNED CRANE

At 140 cm from beak to tail, the red-crested crane is Japan's largest bird. The only wild cranes in Japan live in the marshes of eastern Hokkaido. Driven to the brink of extinction, crisis was averted by the establishment of several habitat conservation zones. Today, you can visit these sanctuaries to see these long-beloved, elegant birds.

### ▲ White-tailed Eagle | Steller's Sea Eagle

Steller's sea eagle is Japan's largest bird of prey, with a wingspan of up to 250 cm. The eagle lives in the far east and is distinguished by its orange beak and black-and-white feathers. The white-tailed eagle is slightly smaller, and can be found in Europe and northern Asia. Its feathers are dark brown, and its tail is white. Both species spend the winter on Hokkaido's shores. The majestic birds entrance photography enthusiasts.



**EZO SIKA DEER**

Ezo sika deer are a subspecies of sika deer endemic to Hokkaido. Males with antlers can grow as long as 190 cm and weigh up to 150 kg. Antler grow anew every March, and forest tours to collect fallen antlers are offered. You can sometimes find herds of deer while driving mountain roads.

### LONG-TAILED TIT ▶

A small Hokkaido bird 10–14 cm long. It emerges from its usual forest habitat from December to February to seek tree sap near human settlements.



### ◀ EZO FLYING SQUIRREL

The 15–18-cm long Ezo flying squirrel is endemic to Hokkaido. An arboreal species, it glides between trees and sometimes builds nests in bird nest boxes.

## Every choice is Hokkaido quality!

With the combined bounty of the sea and the land, Hokkaido is a veritable treasure chest of fine ingredients.

You're sure to enjoy Hokkaido's distinctive cuisine, which uses a full spectrum of fresh seafood and agricultural produce.

### RAMEN



Hokkaido has three main ramen types. Sapporo ramen has curly medium-thick noodles in a miso-based soup. Asahikawa ramen has curly medium-fine noodles in mixed soup containing pork and seafood broth with a soy sauce base. Hakodate ramen has straight medium-fine noodles in a clear soup with a salt base. Each is delicious in its own particular way. While Sapporo ramen is flavorful and full of vegetables, Asahikawa ramen is tasty and savory, and Hakodate ramen is simple and refreshing.



### SOUP CURRY

Another Sapporo specialty, soup curry is distinguished by its use of blended spices in a light soup. Meat and vegetables are added as large chunks to preserve their innate flavors. Soup curry is served with rice, which can be dipped in the soup with a spoon or eaten separately. Each restaurant uses its own unique spice blend, so it's fun to tour them to find your favorite.



### GENGHIS KHAN

"Genghis Khan," or jingisukan, is lamb or mutton grilled with vegetables on a dome-shaped iron plate. Its exact origin is debatable, but when Japan tried to build a domestic wool industry, such dishes were developed to use the resulting meat. In any case, there are two variants: Sapporo style, where the meat is grilled and then dipped in sauce, and Takikawa style, where the meat is marinated before grilling.

*Hokkaido quality*

### SUSHI and SEAFOOD



Surrounded by rich fishing grounds, Hokkaido is Japan's seafood treasure trove, and a major producer of some of Japanese cuisine's iconic ingredients. Each season brings exciting variation to the range of seafood available. Experience delicacies such as fresh sushi, sashimi, and kaisen-don, delicately sliced by expert chefs, in one of Japan's finest seafood regions!



### MELON

Melons are Hokkaido's most famous summer fruit, and are grown in regions such as Yubari and Furano. Both extra-sweet cantaloupes and refreshing honeydew melons are available, so you can enjoy different flavors and textures. Let them ripen at room temperature for five days after picking for the best melon experience.

### ICE CREAM

Thanks to its dairy-friendly environment, Hokkaido is Japan's biggest milk producer. If you visit Hokkaido, absolutely try the soft-serve ice cream made with fresh milk! Different regions also offer their own specialty flavors such as strawberry and melon.



*fresh milk /*



## A toast to Hokkaido's fine spirits.



Hokkaido has been a producer of whiskey, wine, gin, and other beverages ever since beer brewing began here in the second half of the 19th century.

Thanks to its ideal environment for brewing both Western and Japanese spirits, and the passion of its artisans, Hokkaido drinks have earned accolades from Japan and overseas. A factory tour or visit to a bar or direct sales store is a great way to sample Hokkaido's drinks.

## BEER&LOW-MALT BEER



Experience over 145 years of beer-brewing history at the Sapporo Beer Museum, which was opened in Hokkaido's pioneer period.



In the late 19th century, after studying traditional beer production techniques in Germany, brewmaster Seibei Nakagawa began brewing beer at the Kaitakushi Brewery. The cold-brewed beer was named Sapporo Beer. Hokkaido is thus the birthplace of the Japanese beer industry, and Hokkaido people love beer. If you love beer too, check out the Hokkaido's growing selection of craft beers.

## GIN



Honoho, a craft gin, was released in the summer of 2020 by Shakotan Spirit, a company based in the Shakotan Peninsula.

Gin, a spirit imparted with the aroma of juniper berries, has become popular in Japan during the past few years. There are now three craft gin distilleries in Hokkaido, which also produce original gins featuring homegrown botanicals, wild Hokkaido herbs, or even seaweed.



## SAKE

Takasago Shuzo continues to brew sake in a traditional-style building in Asahikawa. Its direct sales store sells brewery-exclusive sake and products processed from sake lees.



Sake (Japanese rice wine) production in Hokkaido dates back to 1872, when Sapporo's first sake brewery was opened. Hokkaido's excellent water quality and long, cold winters made it perfect place for brewing sake. With the growing global popularity of sake, more and more varieties of fine and distinctive sake are being produced.

Find Hokkaido sake info here



Winemaking began in Hokkaido in the second half of the 19th century, but production only began in earnest about 50 years later, when wine from Ikeda town won a Bronze Award at the International Wine Convention. Then European grapes were planted in Otaru and Yoichi, and wine production took off. Now small wineries can be found all over the island, producing wines that express their terroir.

Find Hokkaido winery info here



## WINE

Hokkaido Proud



NIKI Hills Winery offers scenic vineyard views, winery tours, a restaurant, and a direct sales store all in one place.

## WHISKY

Taste whisky and see traditional coal-fired pot stills, extinct in their native Scotland, at Nikka Whisky's Yoichi Distillery. Advance online booking required.

Like whisky's homeland of Scotland, Hokkaido has a cool, humid climate. Whiskies from Hokkaido distilleries have won numerous awards at international competitions. In pursuit of this quality, two new distilleries have been built in Hokkaido. We can hardly wait for the whisky to mature!



Find Hokkaido whisky distillery info here



# WINTER ACTIVITIES

What's Hokkaido most famous for?  
 Winter activities!  
 There are so many ways to  
 have fun.  
 Shake off the cold and enjoy  
 winter sports to the fullest!

## SKIING

There's nothing quite like flying down a mountain with panoramic views. Skis and gear can be rented at most ski fields. Lessons are available so beginners can have fun as they learn.



© Niseko Village

## SKIING & SNOWBOARDING

Always Popular

Nothing says "winter sports" like skis and snowboards! Hokkaido has about a hundred large and small ski fields, and you'd be hard-pressed to find softer and more powdery snow anywhere.

## SNOWBOARDING

Snowboarding, the ultimate combination of speed and cool tricks. There's nothing like the thrill of a perfect run. As with skiing, gear and coaching for beginners are available.



*Exciting*



Hokkaido's Ski Information Portal  
 POWDER SNOW HOKKAIDO  
<https://www.skiing-hokkaido.com/>



Vast and Magical!

Giant chunks of ice drift down from the north, lingering by Hokkaido's northeast coast from around late January to late March. Visit the Sea of Okhotsk to experience the awe!

## DRIFT ICE EXPERIENCE

### Drift Ice Sightseeing and Icebreaker Ship "Aurora"

Roadside Station Ryuhyo-Kaido  
 Abashiri, Minami 3, Higashi 4-5-1  
 Abashiri  
 Tel: 0152-43-6000  
 (Reception open: 9:00-17:00)  
 Season: late January-early April



### Drift Ice Breaker Garinko

1 Kaiyoko-en, Mombetsu  
 Tel: 050-1743-5848  
 (Reception open: 8:30-17:30)  
 Season: mid-January-late March



## RYUHYO WALK® (DRIFT ICE WALK)

Drift ice walking tours are held in winter at Utoro on the Shiretoko Peninsula. You won't find a tour like it anywhere else in Japan.

## DRIFT ICE MUSEUM

Experience drift ice at any time of year! See sea angels and other fauna from the Sea of Okhotsk, encounter real drift ice in a sub-zero room, and learn about the mysteries of nature from the many films and exhibits.

## DRIFT ICE CRUISE

Feel the power as the icebreaker smashes through the ice! It's an amazing experience that few other places can offer.



[RYUHYO WALK®]  
**SHINRA**  
 (Shiretoko Nature Guide Tour Co., Ltd.)  
 187-8 Utoro Nishi, Shari-cho,  
 Shari-gun  
 Tel: 0152-22-5522  
 Season: early February-late March



[DRIFT ICE MUSEUM]  
**Okhotsk Ryu-Hyo Museum**  
 244-3 Tentsozan, Abashiri  
 Tel: 0152-43-5951



Prefer thrills? Relaxation?

# SNOW RAFTING & HORSE RIDING IN WINTER

Take a wild ride on a skidding raft behind a speeding snowmobile, or take in the vastness of nature while riding a horse on the lakeside Toya Course. Whether you like exciting thrills or relaxing leisure, Hokkaido has the perfect winter activity for you.

## WINTER ACTIVITIES

### Feel the snowy plains rush by! SNOWMOBILING & SNOW RAFTING

They're easy to ride and you don't need a license. What's better than dashing across a snowy field with Mt. Yotei in the background? Snowmobile hire plans range from standard, to short, to private tours. Snow rafting on a rubber dinghy behind a speeding snowmobile is also not to be missed.

#### Hokkaido Lion Adventure

60-4 aza Chuo-dori, Niseko-cho, Abuta-gun  
Tel: 0136-43-2882  
Season: early December-late March  
(depending on local snow conditions)



### Run wild with dogs! DOG SLEDDING

Speed across the snow with a pack of furry friends. Exploring the grandeur of nature while working together with dogs is a truly refreshing experience. If you have children or are a beginner, don't worry—every sled has a musher to guide it.



#### Mushing Works

Nishi 31 Sen 25, Urimaku, Shikaoi-cho, Kato-gun  
Tel: 080-3232-8119



### Feel the rush! SNOW TUBING



Sliding down a slope on an inner tube is a different kind of fun from skiing or sledding, but it's fun for everyone. Even little children can enjoy it, because adults and children can ride together!

#### North Snow Land in Chitose

The North Country Golf Club, 26 Rankoshi, Chitose  
Tel: 0123-27-2121 Season: late December-early March



#### Rusutsu Resort

13 aza Izumikawa, Rusutsu-mura, Abuta-gun  
Tel: 0136-46-3332 (Snow Activity Land)  
Season: late December-mid-March



### No sinking with SNOWSHOES

Don't sink up to your calves in the soft snow, strap on a pair of snowshoes! It's winter fun without the workout. Snowshoe hiking tours are offered in many areas, so why not sign up and explore the white wilderness?

#### Hill Town Biei DMO

1-2-14 Motomachi, Biei-cho, Kamikawa-gun  
Tel: 0166-74-5757  
(Weekdays 9:00-17:00)  
Season: mid-December-late March



### A Winter Tradition ICE FISHING FOR SMELT

A easy and relaxing winter pastime. Drill a hole in a frozen lake, drop in a baited line, and wait for sleek little smelt to bite. Everything required, from tents to fishing tackle, are available for hire. Ice fishing at Japan's coldest lake is engrossing fun for people of all ages. The smelt you catch are delicious fried as tempura.

#### Shumarinai Freshwater Fishery Cooperative

Shumarinai, Horokanai-cho, Uryu-gun  
Tel: 0165-38-2470  
Season: mid-January-early April





In demand!

## CYCLING

Rental bicycles and cycling tours are available in most areas, and are a wonderfully refreshing way to take in Hokkaido's scenic mountains, forests, lakes, rivers, and seas.

### Kamishihoro Tourist Information Center

aza Higashitaisetsu Nature Center  
48-2 aza Nukabira Gensenkyo,  
Kamishihoro, Kato-gun  
Tel: 01564-4-2224



Fun and delicious!

## FRUIT HARVEST

Discover 60 cherry varieties in a 1,300-tree orchard. Blueberries, plums, prunes, peaches, grapes, and other fruit can also be picked nearby.

### Ohashi Cherry Farm

469 Kamiashibetsu-cho, Ashibetsu  
Tel: 0124-23-0654  
Cherry season: early July-late August  
Other fruit: late August-late October



### Little Tree

Ochiai Ruma, Minamifurano-cho, Sorachi-gun  
River Base booking: 0167-56-7341  
Adult: ¥7,000 Child: ¥6,000  
(No children under school age)  
(Fee for 2-hr rafting course)  
From 9:00 and 14:00 | Ages 6 and up only



Adrenaline rush!

## RAFTING

Experience the thrill of steering a raft through Hokkaido's beautiful nature together with your friends or family. Some rafting plans include breaks for diving and other fun in the water.

# SUMMER ACTIVITIES



From camps amid verdant nature, to canoeing and rafting on clear rivers, Hokkaido offers no end of attractive summer activities. Which will you choose?

From camps amid verdant nature, to canoeing and rafting on clear rivers, Hokkaido offers no end of attractive summer activities.

Slow and relaxing!

## CANOE

Paddle down the Kushiro River as it slowly winds through the Kushiro Wetlands. Morning, noon, and afternoon courses are available, with each showing the scenery in a different light.

### Kushiro Marsh & River

88-5 aza Toritوشي, Kushiro-cho,  
Kushiro-gun  
Tel: 0154-23-7116  
Season: year-round  
Cost depends on course



Immerse yourself in nature!

## CAMPING/GLAMPING

Camping grounds surrounded by nature are found all over Hokkaido. Whether you prefer a regular tent or auto camp, or a hassle-free glamping experience, you'll never want for options.

### Maple Lodge

183-2 Moyo-cho, Iwamizawa  
Tel: 0126-46-2222  
Season: June-September



Take to the sky!

## HOT AIR BALLOONING

In mid-August, the Hokkaido Balloon Festival is held in the Hokkaido town of Kamishihoro, home of Japan's very first hot air balloon festival. Balloon Festival visitors can experience taking to Hokkaido's skies in a trial balloon ride.

### Hokkaido Balloon Festival

241 Kamishihoro, Kamishihoro-cho, Kato-gun  
Tel: 01564-2-4291  
Season: mid-August



# HOT SPRING SPOTS

Central Hokkaido

Southern Hokkaido

1 Sapporo

2 Jozankei

3 Lake Shikotsu

4 Lake Toya

5 Noboribetsu

Hakodate

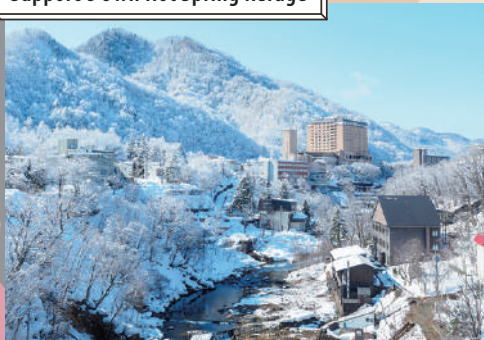
6 Yunokawa



Soaking in onsen (hot springs) is one of Japan's keys to health. Hokkaido has more hot springs than any place in Japan, so don't miss out! This section presents a few of Hokkaido's most notable onsen destinations.

## 01 JOZANKEI ONSEN

Sapporo's Own Hot Spring Refuge



Nestled in a national park only about one hour's drive from central Sapporo, Jozankei Onsen boasts beautiful views that change with the seasons. The gentle, colorless water contains salts and warms you to your core.

Tel: 011-598-2012 (Jozankei Tourist Association)



## 02 NISEKO ONSEN

Lofty Mountain Views



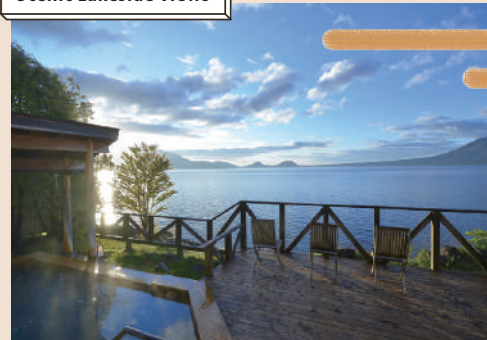
Niseko is famous for skiing, but also has a number of hot springs reputed to be good for the skin. Several of these offer views of Mt. Yotei, Hokkaido's Mt. Fuji, from their outdoor baths.

Tel: 0136-21-2551 (Niseko Promotion Board)



## 03 LAKE SHIKOTSU ONSEN

Scenic Lakeside Views



Lake Shikotsu is becoming famous for its unique geography and astounding clarity. At the hot springs on its shore, you can bathe while admiring the beautiful scenery. The area is conveniently located within an hour's drive of New Chitose Airport.

Tel: 0123-25-2404 (Lake Shikotsu Visitor Center)



## 04 NOBORIBETSU ONSEN

One of Japan's Premier Onsen Hotspots



The quintessential hot spring hotspot, with gushing hot water and the smell of sulfur. The whole town is steeped in onsen culture. It's rare even in Japan to be able to bathe in different types of hot spring in the same place.

Tel: 0143-84-3311  
(Noboribetsu International Tourism and Convention Association)



## 05 LAKE TOYA ONSEN

Relax and Take in the Lake View



Toyoko Onsen boasts magnificent lake views and waters that leave you warm even after bathing, and offers more hot spring inns in one place than anywhere else in Hokkaido. Travelers are welcomed with fireworks from late April to the end of October.

Tel: 0142-75-2446 (Toyoko Onsen Tourist Association)



## 06 YUNOKAWA ONSEN

Nostalgic Harbor Prospects

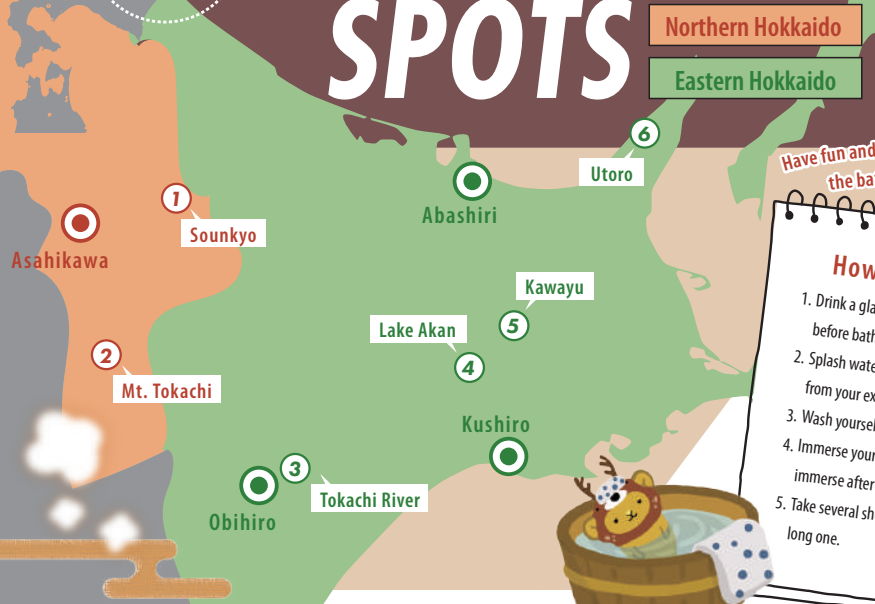


Loved by bathers for over 350 years, this seaside onsen hotspot offers heartwarming views of fishing boat lights in Tsugaru Strait at night. The colorless, scentless water is gentle on the skin but thoroughly warming.

Tel: 0138-57-8988  
(Hakodate Yunokawa Hot Springs Ryokan Cooperative)



# HOT SPRING SPOTS



Northern Hokkaido  
Eastern Hokkaido

Have fun and follow the bathhouse rules, too!

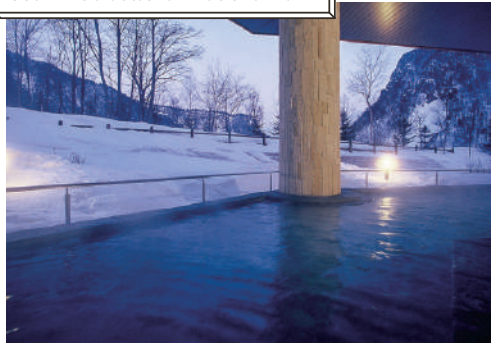
**How to Bathe**

1. Drink a glass of water 30 minutes before bathing.
2. Splash water on your body, working from your extremities inwards.
3. Wash yourself thoroughly.
4. Immerse yourself waist-deep and fully immerse after you warm up.
5. Take several short baths instead of one long one.



## 01 SOUNKYO ONSEN

Soak in Daisetsuzan National Park



Surrounded by a vast and majestic natural environment, Sounkyo Onsen is a haven of relaxation for hikers climbing the Daisetsu Mountains. The Ice Fall Festival, held from late January to mid-March, is also a must-see.



Tel: 01658-2-1811 (Sounkyo Tourism Association)

## 02 MT. TOKACHI ONSEN

Hokkaido's Highest Hot Spring



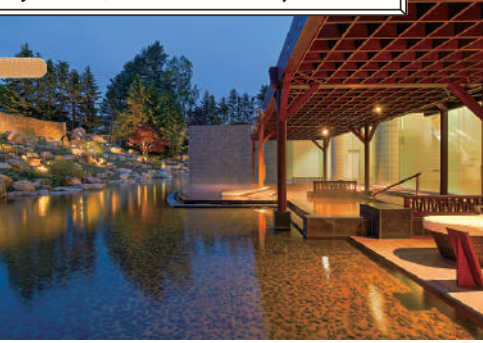
A scenic hot spring hideaway near the trailhead for Mt. Tokachi, the closest peak of the Daisetsu Mountains to Furano and Biei. It's a rare and special experience to soak in a hot spring amid alpine scenery.



Tel: 0167-45-3150 (Kamifurano Tokachidake Tourist Association)

## 03 TOKACHIGAWA ONSEN

Bijin-no-Yu, the "Natural Beauty Serum"



Hokkaido is home to many of Japan's organic matter-rich "moor" hot springs, and the foremost of these is Tokachigawa Onsen. Tinged with ancient plant residues, the water is likened to a beauty serum and is popular with women.



Tel: 0155-32-6633 (Tokachigawa Onsen Tourist Association)

## 04 LAKE AKAN ONSEN

Unspoiled Nature by Lake Akan



Lake Akan is located in a national park and is a habitat for marimo, spherical moss-like algae balls. The onsen town on its shore has a thriving Ainu cultural quarter. The water itself is colorless and odorless, perfect for all skin types.



Tel: 0154-67-3200 (Akan Tourism Association)

## 05 KAWAYU ONSEN

A Unique Natural Hot Spring



One of the few highly acidic hot springs in Japan, which has a strong antimicrobial effect. If you take a walk along the path to Mt. Ito, then you'll see how unique the area's nature is, and understand how the water is the gift of an active volcano.



Tel: 015-483-2670 (Kawayu Onsen Tourist Center)

## 06 UTORO ONSEN

See the Endless Drift Ice



Utoro Onsen is Shiretoko's biggest tourist hub. Many local resorts have baths with ocean views, appreciated by tourists weary from exploring the World Heritage Area. In the winter, bathers can enjoy panoramic views of drift ice.



Tel: 0152-22-2125 (Shiretoko Shari-cho Tourist Association)

## CULTURE IN HOKKAIDO



# AINU PURI

Ainu culture is a precious part of Japan's culture that is on the verge of extinction. Upopoy National Ainu Museum and Park was opened in 2020 to play a central role in reviving and spreading Ainu Culture. Kyun-chan visited and found many exciting experiences. Won't you take a look, too?

### Who are the Ainu people?

Ainu are the native inhabitants of the northern Japanese archipelago and Kuril islands, especially Hokkaido. They have their own unique language and culture, including traditional patterns and dances.

### Old and New Ainu Cuisine

## RESTAURANT/FOOD COURT



Courtesy of The Foundation for Ainu Culture

Tasty, beautiful and healthy: HARU RAN NA offers delicious dishes made with ingredients central to Ainu culture. The photo above shows fire-roasted yuk (Ezo deer) (¥2,800 with soup and bread).

Open Flame Dining and Cafe  
**HARU RAN NA**  
Traditional Ainu ingredients with a modern twist  
Tel: 0144-84-6545  
11:00-15:00  
(Last order at 14:30)

### Step back in time!

## KOTAN (TRADITIONAL AINU VILLAGE)

Experience the traditional Ainu living environment in a replica cise (house).



Courtesy of The Foundation for Ainu Culture

## NATIONAL AINU MUSEUM AND PARK

# UPOPOY



(Photo for illustrative purposes only)

Courtesy of The Foundation for Ainu Culture

## Museum Shop NATIONAL AINU MUSEUM MUSEUM SHOP



Courtesy of The Foundation for Ainu Culture

The Museum Shop at the National Ainu Museum sells a variety of traditional Ainu crafts and museum-exclusive goods.



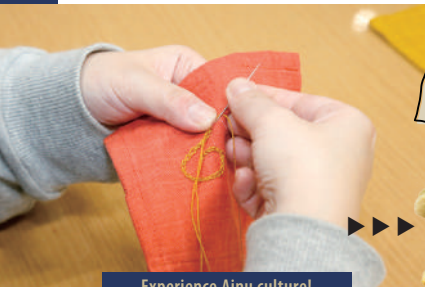
Courtesy of The Foundation for Ainu Culture

### Learn all about Ainu culture!

## NATIONAL AINU MUSEUM

Japan's first and northernmost museum devoted to the history and culture of the Ainu people, Hokkaido's indigenous inhabitants. The Permanent Exhibition Room presents six themes from an Ainu perspective: language, universe, lives, history, work, and exchange.

Try your hand at Ainu patterns!



### Experience Ainu culture!

## WORKSHOP PROGRAM ACTIVITIES CULTURAL EXCHANGE PROGRAM

Embroider Ainu patterns with chain stitches. The pointy "horns" are the key. You sew the start and the spirals, continue through the horns, keep going... and even if it's not perfect, you get there!

### These are just some of the experiences available:

- ◆ Wood engraving    ..... Engrave Ainu patterns on a smartphone stand
- ◆ Mukkuri carving    ..... Shape a mukkuri (Ainu mouth harp) with an engraving chisel
- ◆ Cooking    ..... Cook and taste Ainu ohaw (soup)

Various other experiences are offered such as traditional dances, plays, and other events.

## Upopoy National Ainu Museum and Park

2-3 Wakakusa-cho, Shiraai-cho, Shiraai-gun  
Tel: 0144-82-3914 (The Foundation for Ainu Culture)  
Nov 11-Mar 31 9:00-17:00  
Closed Mondays (or the next business day if Monday is a holiday) and Dec 29-Jan 3  
Adult: ¥1,200, high school student: ¥600, junior high and younger free.



## Hoshino Resorts KAI Poroto



A hot spring resort on the shore of Lake Poroto which offers scenic lake views from every room. When you bathe in the pointed bathhouse's moor (organic) hot spring, rich in organic matter dissolved from ancient plant material, you feel almost as if you're floating in the lake in front of you.

**KAI Poroto**  
1-1018-94 Wakakusa-cho, Shiraai-cho, Shiraai-gun  
050-3134-8092



# WORLD CULTURAL HERITAGE JOMON

The Jomon Prehistoric Sites in Northern Japan are cultural heritage sites that tell of the livelihoods and spirituality of a sedentary people who sustainably used the natural bounty of the forests, seas and rivers for over 10,000 years through hunting, fishing and gathering. This World Heritage area is composed of 17 Jomon-period sites, including settlements, burial grounds, and stone circles used for rituals and ceremonies, in the prefectures of Hokkaido, Aomori, Iwate, and Akita.

Source: JOMON ARCHIVES



## DATE KITAKOGANE SITE B.C.5,000 - 3,500

A shell mound on a hill facing Uchiura bay. Excavations have revealed not only shells and fish bones, but also the bones of fur seals, whales, and other marine animals.



Property of Date City Board of Education



Kitakogane-cho, Date  
Tel: 0142-24-2122 (Kitakogane Site Information Center)

## CHITOSE KIUSU EARTHWORK BURIAL CIRCLES B.C.AROUND 1,200



Property of Chitose City Board of Education



Nine donut-shaped grave sites, eight of which retain their original shape, formed by mounding earth around circular pit dwellings.

Chuo, Chitose  
Tel: 0123-24-4210 (Chitose City Buried Cultural Properties Center)



Property of Hakodate City Board of Education

### Hakodate Jomon Culture Center

551-1 Usujiri-cho, Hakodate  
Tel: 0138-25-2030

▲ Property of  
Hakodate City  
Board of Education



Home to the "Hollow Dogu," Hokkaido's own national treasure, the museum displays Jomon-period stone tools, pottery, ornaments, and other artefacts excavated in Hakodate.



## HAKODATE OFUNE SITE B.C.3,500 - 2,000

A hub settlement with large ceremonial earth mounds. More than 100 pits have been found, including graves and storage pits, as well as large dwelling pits over two meters deep.

Ofune-cho, Hakodate  
Tel: 0138-25-2030  
Hakodate Jomon Culture  
Center



Property of Hakodate City Board of Education



## HAKODATE KAKINOSHIMA SITE B.C.AROUND 7,000-1,000

Everyday and special spaces are set apart for living and burial here, where U-shaped earth mounds were raised around 2,000 BC.

Usujiri-cho, Hakodate  
Tel: 0138-25-2030  
(Hakodate Jomon Culture Center)



## TOYAKO IRIE SITE TAKASAGO BURIAL SITE IRIE : B.C.AROUND 1,800 TAKASAGO : B.C.AROUND 1,000

A communal burial site and shell mound from when permanent settlements were maturing. At the Irie Site, the bones of an adult with muscular atrophy were found, and graves of pregnant and nursing mothers were found at the Takasago Burial Site.



Irie Site



Takasago  
Burial Site



44 Takasago-cho, Toyako-cho, Abuta-gun  
Tel: 0142-76-5802 (Irie-Takasago Shell Mound Museum)



Property of Toyako Town Board of Education

## Visitor Facility MORI WASHINOKI STONE CIRCLE B.C.Around 2,000

The largest stone circle in Hokkaido, with two rings of stones around a central ellipse.

aza Washinoki-cho, Mori, Kayabe-gun  
Tel: 01374-3-2240  
(Mori Town Office for Archaeological  
Excavation and Research)





# HOKKAIDO EVENTS

SPRING and SUMMER



In summer, festivals and colorful nighttime fireworks displays are held all around Hokkaido.

Tourists are welcome to participate at many festivals, so why not join in and enjoy Hokkaido's short summer to the fullest!



A dance contest with its roots in Kochi Prefecture's Yosakoi Festival. Teams of performers in colorful, original costumes dance energetically to the *soran-bushi*, a fiery Hokkaido folk song.

**YOSAKOI Soran Festival Organizing Committee**  
Tel: 011-231-4351  
Venues: 10 sites in Sapporo, primarily Odori Park



SAPPORO Early June

## YOSAKOI SORAN FESTIVAL

SAPPORO

Late July–Mid-August

## SAPPORO SUMMER FESTIVAL



An event held since 1954 to celebrate the North's short summer. Odori Park become a venue for the Hokkai Bon-odori folk dance, as well as the Sapporo Odori Beer Garden, which donates part of its profits to charity. To enjoy Sapporo's summer to the fullest, you can attend the Susukino Festival and Tanuki Festival elsewhere in the city.

**Sapporo Summer Festival Executive Committee**

Tel: 011-281-6400  
Venues: Odori Park, Susukino, Tanukikoji Shopping Arcade



FURANO Usually July 28–29

## HOKKAI HESO FESTIVAL

The Hokkai Heso Festival, also known as the Bellybutton Festival, is held in Furano, which could be called the belly button of Hokkaido. Participants paint humorous faces on their stomachs and dance, filling the venue with smiles and laughter.

Heso Matsuri Executive Committee  
Tel: 0167-39-2312  
Venue: Shin-aioi Shopping Street Festival Site



HAKODATE Early August

## HAKODATE PORT FESTIVAL

Hakodate's biggest summer event! The festival features the Wasshoi Hakodate parade, in which performers dance the Hakodate Squid Dance, and an enormous firework display at night. The events are enjoyable for tourists as well as locals.

Hakodate Port Festival Committee  
Tel: 0138-27-3535  
Venue: Otemachi, Wakamatsu, and Matsukaze



OBIHIRO Mid-August

## KACHIMAI FIREWORKS FESTIVAL

One of Hokkaido's biggest fireworks festivals, held in Obihiro on August 13 every year, with impressive displays of fireworks synchronized to music and lights.

Sales/Business Departments,  
Tokachi Mainichi Newspaper  
Tel: 0155-22-7555 (9:00–18:00 weekdays)  
Venue: Festival site on the Tokachi River bed in Obihiro (about 400 m downstream of the Tokachi Ohashi Bridge)



# HOKKAIDO EVENTS

AUTUMN and WINTER



In the fall harvest season, food events are held all around Hokkaido. And in the winter, there are so many ethereal snow and ice events!  
Enjoy the events that these seasons bring!



SAPPORO Late September–Early October

## SAPPORO AUTUMN FEST

A food festival to captivate your tastebuds with Hokkaido's amazing seasonal ingredients and delicacies. The various venues offer chances to savor different flavors from all over Hokkaido.

Sapporo Autumn Fest  
Executive Committee

Tel: 011-281-6400  
Venue: Odori Park and  
other sites



HAKODATE Early December–Late December

## HAKODATE CHRISTMAS FANTASY

When the gigantic, otherworldly Christmas tree is set up, a Christmas mood envelops the Red Brick Warehouses in the Hakodate Bay area. Every evening, fireworks are set off when the tree is lit up.

Hakodate Christmas Fantasy Executive Committee Office  
Tel: 0138-27-3535  
Venue: Sea in front of the Kanemori Red Brick Warehouse  
(Suehiro-cho, Hakodate)



CHITOSE Late January–Late February

## ICE STORM FESTIVAL

One of Hokkaido's foremost winter festivals, featuring gigantic, beautiful ice structures made from spray-frozen clear water from Lake Shikotsu. At night, colorful lights turn the ice into a surreal fantasy scene.

Lake Shikotsu Festival Committee Tel: 0123-23-8288  
Venue: Shikotsuko Onsen, Chitose  
Fee: ¥500 (free for junior high school students and younger)



SAPPORO Late January–Early February

## SAPPORO SNOW FESTIVAL

The Snow Festival, which has been held since 1950, is one of Hokkaido's biggest and most famous events. Every year, awe-inspiring snow and ice sculptures are built depicting famous buildings from around the world and characters that were popular in the previous year.

Sapporo Snow Festival Executive  
Committee

Tel: 011-281-6400

Venues: Odori Park, Susukino, Tsudome



Odori Site

Odori Park is transformed into a snowy wonderland, with snow sculptures and other winter attractions.

Susukino Site

Enjoy seeing and touching the ethereal ice sculptures that line the venue.



Tsudome Site

Feel and play in the snow in a way that only Hokkaido can offer at the Community Dome, which hosts attractions such as giant slides for all ages.

SHIKAOI Late January–Mid-March

## LAKE SHIKARIBETSU KOTAN

On the frozen surface of Lake Shikaribetsu, lying almost in the middle of Hokkaido, a little *kotan* (village) of ice and snow is built. Visitors can enjoy drinks at a bar made of ice, soak in an outdoor bath, and take guided walks, all on the frozen lake.

Lake Shikaribetsu Kotan Executive Committee  
Tel: 0156-69-8181  
Venue: Lake Shikaribetsu (Lake Shikaribetsu,  
Shikaoi-cho, Kato-gun)



OTARU Early November–Late January

## THE BLUE CANAL

During the cold months, Otaru Canal is romantically illuminated with 10,000 blue LEDs. After sundown, the blue light mixes with the pale lingering twilight, giving the area a dreamy, otherworldly look. During the illumination season, visitors can take a cruise on the canal in a boat covered in blue lights.

Otaru Tourism Association  
Tel: 0134-33-2510  
Venue: Asakusa Bridge—Chuo Bridge



**ISHIYA Shiroi Koibito White**

A classic sweet made with langue de chat biscuits around a white chocolate core.



**ROKKATEI Marusei Butter Sandwich**

Sandwich cookies filled with white chocolate buttercream



**MORIMOTO Haskap Jewelry**

Thin cookies enclosing buttercream and jam made from haskap berries, a specialty Hokkaido fruit.



**ROYCE' Potatochip Chocolate (Original)**

A popular sweet made of potato chips coated on one side with chocolate.



**CALBEE Jaga Pokkuru**

A lightly-flavored snack made from whole Hokkaido Potatoes, skin and all.



Hokkaido souvenirs are the most popular local souvenirs in Japan. This is a selection of some old classics and unique new favorites.

# A SELECTION OF HOKKAIDO SOUVENIRS



**RYUGETSU Sanporoku**

A classic sweet made from baumkuchen with a birch-bark pattern drawn with dark and white chocolate.



**HORII Yubari Melon Pure Jelly**

A jelly made from the finest Yubari melons that recreates their silky texture, musky aroma, and overflowing juiciness.



**YOSHIMI Sapporo Okaki Oh! Yakitokibi**

Rice crackers with the flavor of golden brown grilled corn and the aroma of caramelized soy sauce.



**KITAKARO Hokkaido Kaitaku Okaki**

Premium rice crackers flavored with carefully selected Hokkaido seafood such as Hakodate squid.



**LE TAO Double Fromage**

An airy melt-in-the-mouth cheesecake combining a baked cheesecake base with an unbaked cheese mousse.



**KINOTOYA Sapporo Agricultural College Hokkaido Milk Cookie**

Light, meltingly flavorful cookies made with fresh Hokkaido milk, wheat, and butter.



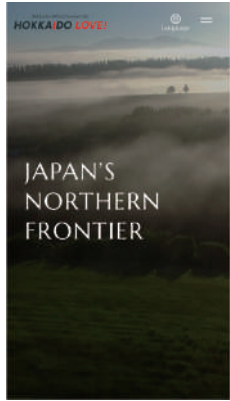
Useful Links for a Safe and Fulfilling Trip

website

HOKKAIDO LOVE!

English

### Hokkaido Official Tourism Site **HOKKAIDO LOVE!**



Your guide to Hokkaido's world-famous seasonal scenery, activities, gourmet cuisine, hot springs, and other captivating delights.

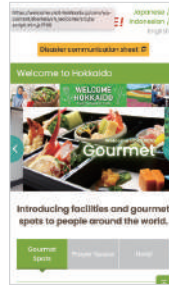
Hokkaido Official Tourism Site

Facebook

Instagram



### WELCOME HOKKAIDO Muslim & Vegetarian Guide



Learn about Muslim prayer spaces, restaurants and hotels catering to people with dietary restrictions, and other facilities in Hokkaido.



### Foreign-language Healthcare Providers (JNTO website)



Don't worry about falling ill in Hokkaido—search here for a medical institution that speaks your language.



# A Natural Paradise! **HOKKAIDO** *Japan*



### Point-to-Speak Communication Sheets

Download our handy cheat sheet to ask about disasters, solve hotel room issues, find your destination, and more.

